

2026 TECHNICAL SHEET FOR COURSE CARDS – REV 0

High Water - Howth (Local Time)

Mid Week						Saturdays		
Date	Time	Ht (m)	Date	Time	Ht (m)	Date	Time	Ht (m)
May-05	14:27	3.52	May-06	15:07	3.34	May-09	17:52	2.99
May-12	21:04	3.44	May-13	21:55	3.71	May-16	11:47	4.20
May-19	14:16	3.95	May-22	17:11	3.37	May-23	18:20	3.29
May-26	21:24	3.48	May-27	22:08	3.59	May-30	11:40	3.67
Jun-02	13:34	3.56	Jun-03	14:12	3.47	Jun-06	16:24	3.22
Jun-09	19:16	3.30	Jun-12	22:10	3.91	Jun-13	10:34	3.91
Jun-17	14:09	3.92	Jun-17	14:09	3.92	Jun-20	16:46	3.52
Jun-23	19:40	3.30	Jun-26	22:16	3.52	Jun-27	10:34	3.40
Jun-30	14:41	3.55	Jul-01	13:19	3.56	Jul-04	15:13	3.50
Jul-07	17:31	3.38	Jul-08	18:30	3.39	Jul-11	9:12	3.59
Jul-10	20:42	3.60	Jul-10	20:42	3.60	Jul-18	15:26	3.81
Jul-21	17:46	3.33	Jul-22	18:43	3.22	Jul-25	9:16	3.14
Jul-28	23:58	3.90	Jul-28	23:58	3.90	Aug-01	14:11	3.75
Aug-04	16:06	3.61	Aug-05	16:54	3.52	Aug-08	7:42	3.34
Aug-11	23:31	4.26	Aug-12	12:08	3.94	Aug-15	14:13	4.05
Aug-18	16:08	3.57	Aug-19	17:45	3.19	Aug-22	7:33	2.94
Aug-25	22:53	3.73	Aug-26	23:33	3.96	Aug-29	13:09	3.95

Tues
Wed
Fri

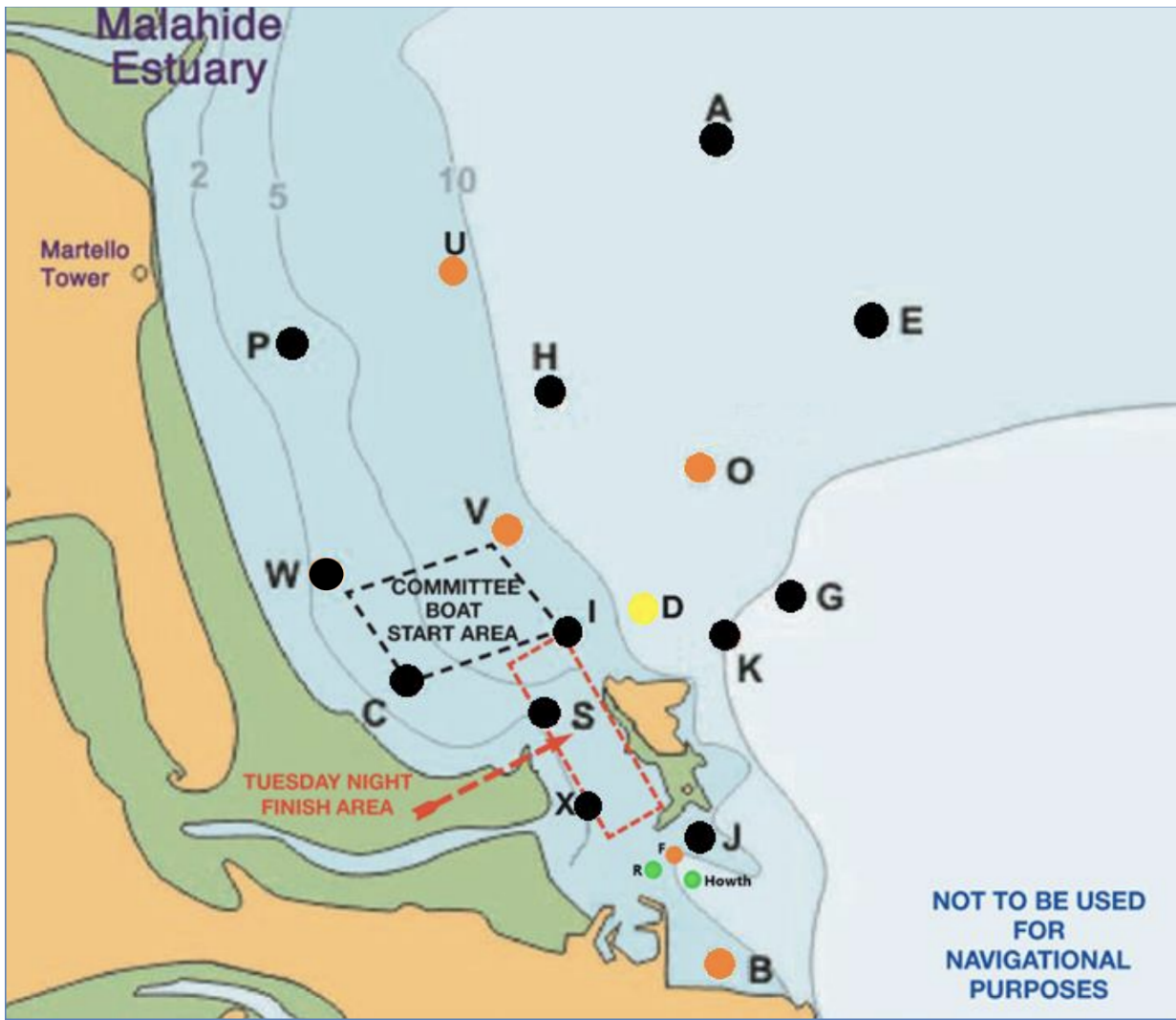
30 & 40 Course Marks

ID	Name	Shape	Colour
1	Windward	Inflatable	Black
2	Gybe	Round	Red
2	Offset	Round	Red
3	Leeward	Round	Red
F	Finish	Round	Red

Pier Course-Board Display

Course	Start Line
Two digits read from top to bottom	A - South Rowan B - Finish Mark C - Howth Mark
Corresponds to LINE on Course Card	Selected Course Corresponds to COLUMN on Course Card

MARK DESCRIPTIONS / POSITIONS (Approx)					
ID	Name	Shape	Colour	Latitude (N)	Longitude (W)
				Deg Min	Deg Min
A	Apex	Conical	Black	53 26.76	06 03.26
B	Balscadden	Cylindrical Pillar (small)	Orange	53 23.30	06 03.26
C	Cush	Cylindrical Pillar	Black	53 24.61	06 05.45
D	Dunbo	Cylindrical Pillar	Yellow	53 24.73	06 03.85
E	East	Conical	Black	53 26.00	06 02.20
F	Finish	Cherry	Orange	<i>Between Ireland's Eye & East Pier Hut</i>	
G	Garbh	Conical	Black	53 25.00	06 02.32
	Howth	IALA	Green	53 23.69	06 03.56
H	Hub	Cylindrical Pillar	Black	53 25.71	06 04.43
I	Island	Cylindrical Pillar	Black	53 24.70	06 04.36
J	Thulla	Cylindrical Pillar (small)	Black	53 23.80	06 03.40
K	Stack	Conical	Black	53 24.60	06 03.11
O	Osprey	Conical	Orange	53 25.41	06 03.52
P	Portmarnock	Cylindrical Pillar	Black	53 25.63	06 05.80
Q	Rowan Rocks	IALA	Black & Yellow	53 23.88	06 03.22
R	South Rowan	IALA	Green	53 23.78	06 03.88
S	Spit	Cylindrical Pillar	Black	53 24.35	06 04.48
U	Ulysses	Conical	Orange	53 26.22	06 04.97
V	Viceroy	Cylindrical Pillar	Orange	53 25.12	06 04.78
W	West	Cylindrical Pillar	Black	53 24.96	06 06.07
X	Xebec	Cylindrical Pillar (small)	Black	53 23.83	06 04.41
Y	Ireland's Eye				
Z	Zephyr	Inflatable	Black	<i>Upwind of Start Line</i>	



Race Marks - Relative Bearings - Magnetic (approx)

These relative bearings are a guideline only

	A	B	C	D	E	G	H	I	J	K	O	P	Q	S	U	V	W	X
A		180	211	190	140	162	216	198	182	178	186	238	179	197	244	209	224	194
B	000		319	352	013	021	347	335	349	004	356	328	005	325	347	335	316	309
C	031	139		082	054	077	029	082	125	090	055	350	118	113	010	037	314	143
D	010	172	262		038	074	340	262	170	105	016	309	158	224	336	305	279	202
E	320	193	234	218		182	258	225	204	202	233	260	195	220	279	241	246	213
G	342	201	267	254	002		300	256	209	235	300	288	204	244	308	277	267	228
H	036	170	209	160	078	120		178	168	145	120	267	164	181	328	200	233	181
I	018	155	262	082	045	076	358		148	094	035	316	140	193	346	332	287	182
J	002	169	305	350	024	026	348	328		011	358	326	061	317	345	334	312	276
K	358	184	268	286	022	055	325	274	191		343	302	185	256	326	297	281	226
O	012	182	235	203	058	126	305	219	178	163		279	180	215	319	256	260	199
P	058	148	170	129	080	108	087	136	146	122	099		143	146	036	129	195	157
Q	359	185	298	338	015	024	344	320	241	005	353	323		308	337	329	308	285
S	017	145	293	044	040	064	001	013	137	076	029	326	128		351	348	303	178
U	064	167	190	156	099	128	148	166	165	146	133	216	157	171		174	208	174
V	029	155	217	125	061	097	025	152	154	117	069	309	149	168	354		259	172
W	044	136	134	099	066	087	053	107	132	101	074	015	128	133	028	079		140
X	014	129	323	022	033	048	001	002	096	046	019	337	115	358	354	356	320	