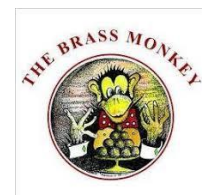




TADG RIORDAN MOTORS
ASHBOURNE & TALLAGHT

BUILT FOR A BETTER WORLD



Brass Monkeys Spring Series 2026 Sailing Instructions

The Organising Authority (OA) is Howth Yacht Club CLG.

The ethos of the Brass Monkeys series is to provide a “fun” sailing series. Competitors should note this ethos and races should be sailed accordingly.

1. Rules & Eligibility

- 1.1 The races will be governed by the Racing Rules of Sailing 25-28 (RRS), the prescriptions of Irish Sailing, the Notice of Race, these Sailing Instructions (SI) and any changes thereto.

2. Changes to Sailing Instructions

- 2.1 Changes to the Sailing Instructions will be posted on the official notice board not later than 1.5 hours before the scheduled start of the first race so affected..

3. Communications with competitors

- 3.1 Notices to competitors will be posted on the HYC official notice board which is located in the archway adjacent to the marina office.
- 3.2 All boats competing shall be equipped with a VHF radio and are requested to keep a listening watch on Ch.16, in case of emergency.
- 3.3 All communications to/from the Committee Boat will be on Ch. 77.
- 3.4 The Race Committee may broadcast information relevant to competitors on Ch 77 and boats are advised to keep watch for such transmissions. Failure to receive such information shall not be grounds for redress.

4. Code of Conduct – NOT USED

5. Signals Made Ashore

- 5.1 Signals made ashore will be displayed on the flagpole at the top of the marina bridge.
- 5.2 When flag AP is displayed ashore “one minute” is replaced with “not less than 45 minutes” in race signal AP. This changes RRS “Race Signals”. Boats are requested not to leave the harbour until flag AP is lowered. This changes RRS ‘Race Signals’.

6. Schedule of Races

- 6.1 One race per day is scheduled however, in the event of a race being lost due to adverse weather conditions the Race Officer may run a second race if conditions permit. A maximum of six races will be run during the series.
- 6.2 Should the Race Officer decide to run a second race, code flag E will be displayed on the committee boat at the end of race 1 of that day.

7. Class Flags

- 7.1 Boats shall display the sail number under which they are entered on their spinnaker and on each side of the mainsail. Failure to comply with this requirement may result in the boat being scored DNS.
- 7.2 Where a boat wishes to change its sail number from that on the entry form, notice shall be given to the Race Officer prior to her start on the day of the race concerned. Failure to comply with this requirement may result in the boat's disqualification. This changes RRS 63.1.
- 7.3 Class pennants shall be flown from the backstay. Any boat not doing so may be scored DNS. This changes RRS 63.1 and A5.1.

Class	Flag
1	Numeral Pennant 1
2	Numeral Pennant 2
3	Numeral Pennant 3

- 7.4 Boats are requested to sail near the Committee Vessel prior to their warning signal for identification purposes.

8. Race Area

- 8.1 The Race Area will be Northwest of Ireland's Eye.

9. Courses

- 9.1 Courses will be in accordance with the course card, which forms part of these Sailing Instructions, available on the www.hyc.ie website and will be indicated by numeral boards displayed on the Committee Vessel.
- 9.2 The course applicable to each Class will be displayed for not less than 4 minutes before its start. This changes RRS 27.1.

10. Marks

- 10.1 Special Brass Monkey marks may be laid for the series.
- 10.2 Marks are orange spherical or black conical as follows:

Letter	Mark
C	Cush
D	Dunbo
H	Hub
I	Island
P	Portmarnock
S	Spit
W	West
V	Viceroy

Note: The Spit mark is to be passed to the north and east.

11. Obstructions

- 11.1 The attention of competitors is drawn to the existence of underwater hazards in the vicinity of Ireland's Eye, Howth Sound and over the Spit Bank. Should they choose to sail amongst these hazards, they do so at their own risk. Howth Yacht Club CLG, the Race Management and Organising Committee accept no responsibility for the consequences of any such deviation from the set courses.
- 11.2 When entering and leaving the harbour, always pass other vessels PORT-TO-PORT.
- 11.3 Boats shall not impede trawlers or fishing vessels in the Sound or Harbour Entrance.
- 11.4 Competitors' attention is drawn to the designated navigation channel through the harbour.
- 11.5 Boats should remain within the channel markers whilst entering and leaving the harbour.

Times of High-Water Howth

Date	Time	Height/m
25 th January	15:57	3.92
1 st February	11:03	4.09
8 th February	15:54	3.60
15 th February	10:23	3.71
22 nd February	14:40	4.07
28 th February	09:09	3.63

12. The Start

- 12.1 The starting line will be between the red and white pole displaying an orange flag on the Committee Vessel and either a cylindrical orange buoy or an orange buoy with a flag on top. Boats shall keep clear of the starting line until their warning signal.
- 12.2 A boat shall not start later than 10 minutes after her starting signal. Any boat not doing so shall be scored DNS. This changes RRS 63.1 and A5.1.
- 12.3 The warning signals will be as per the table below.

Class	Flag	Warning Signal
Class 3	No. 3	10:25
Class 1	No. 1	10:30
Class 2	No. 2	10:35

13. Changes to the next leg of the course – Not Used

14. The Finish

- 14.1 The finishing line will be a line between a red and white pole displaying a blue flag on the Committee Vessel and a spherical orange cherry mark, unless a race is shortened.
- 14.2 Unless a race is shortened, all finishes will be south of the Island mark in the vicinity of the Sound.

- 14.3 Boats, having finished, are required to keep clear of all boats still racing (including on a different race course). Those not doing so may be disqualified without a hearing. This changes RRS 63.1 and A5.1.
- 14.4 A race may be shortened at any mark on the course.
- 14.5 Any boat retiring shall inform the Race Committee on VHF channel 77

15. Penalty System – Not Used

16. Time Limits

- 16.1 On single race days, Race Time Limit is 12:45 for all Classes. If a boat in any Class finishes within that time limit, the time limit for that Class shall be extended to 13:00.
- 16.2 On two race days, the Race Time Limit for all Classes will be 13:15 for all classes. If a boat in any Class finishes within that time limit, the time limit for that class shall be extended to 13:30

17. Hearing Requests

- 17.1 Protests, Requests for Redress or Reopening and Scoring Enquiries shall be submitted online at

<http://tinyurl.com/mx3fsmnz>

- 17.2 The Protest Time Limit is 15:00 each day.
- 17.3 Notices of protests by the Race Committee will be posted online, at the same link, to inform boats. This changes Rule 61.1(b).
- 17.4 Times and locations of protest/redress hearings shall be notified to all parties involved.

18. Scoring

- 18.1 Handicaps shall be assigned to competing boats as outlined in the Notice of Race.
- 18.2 All handicaps are at the discretion of the OA and will be revised throughout the series.
- 18.3 Where there is a change to either a boat or her crew that may materially affect that boat's performance, her owner must, in writing, inform the OA of the change. In such a case, the OA may amend that boat's performance handicap to reflect that change.
- 18.4 When fewer than 6 races have been completed, a boat's series score is the total of her race scores.
When 6 races have been completed, a boat's series score is the total of her race scores excluding her worst score.

19. Safety Regulations

- 19.1 Each crew member shall wear a PFD (personal flotation device) and RRS40.1 shall apply. Competitors' attention is also drawn to RRS Part 1 (Fundamental Rules) and the Irish Sailing safety booklet.
- 19.2 Boats shall carry adequate life-saving equipment for all persons on board equipment.

20. – 28 Not Used

29. Prizes

Prizes will be awarded for each class, the number dependent upon the number of entries in each class.

30. Risk Statement

30.1 Rule 3 of the Racing Rules of Sailing states: "The responsibility for a boat's decision to participate in a race or to continue racing is hers alone."

30.2 Sailing is, by its nature, an unpredictable sport and therefore inherently involves an element of risk. By taking part in the event, each competitor agrees to and acknowledges the risk statement as included in the Notice of Race."

31. Insurance

Each participating boat shall be insured with adequate, valid, third-party cover with an appropriate extension for racing risks.

MARK LOCATION CARD

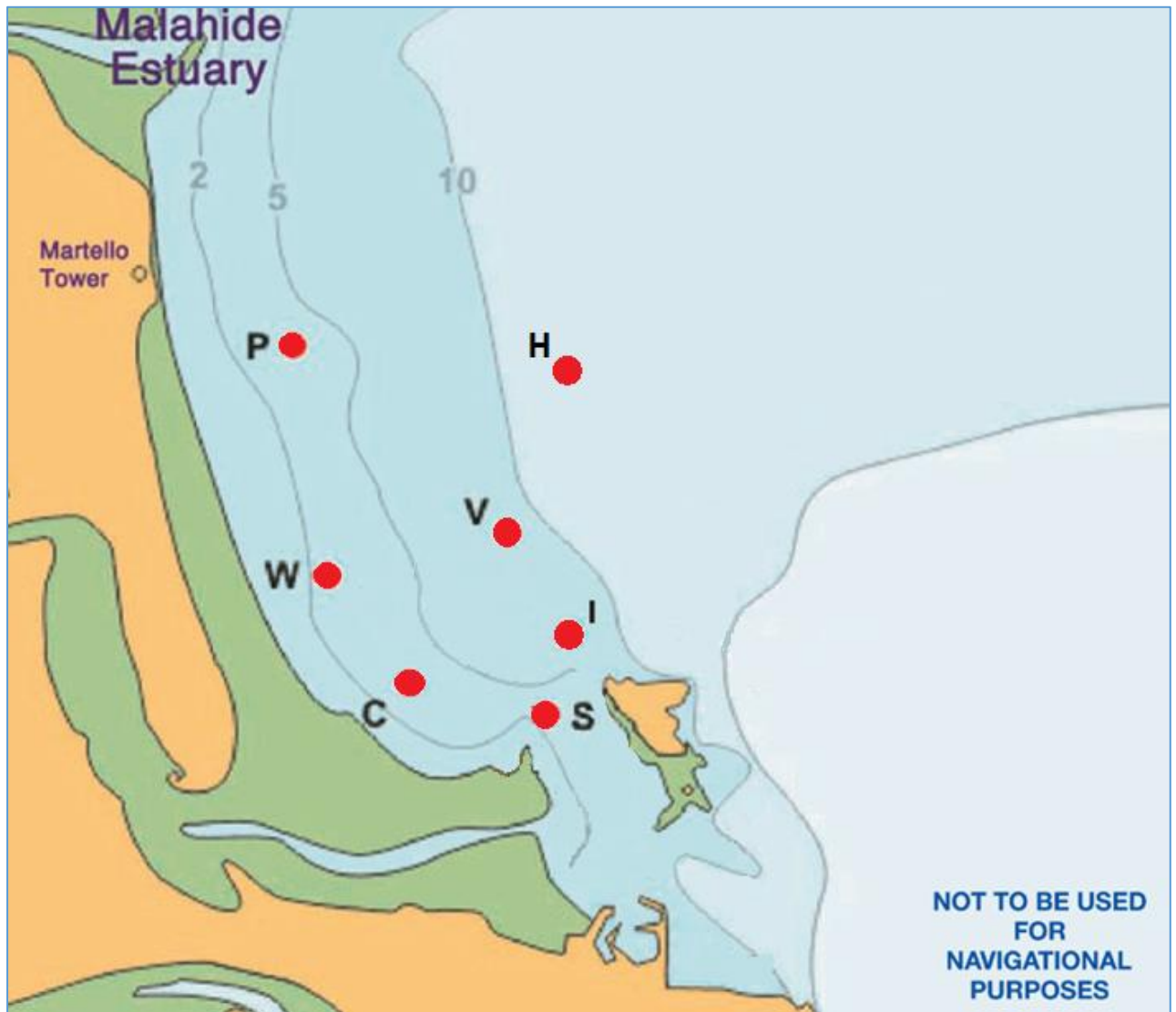


Image not to scale and should not be used for navigational purposes.

Mark	ID	North	West
Cush	C	53 24.5	06 05.44
Dunbo	D	53 24.73	06 03.85
Hub	H	53 25.71	06 04.43
Island	I	53 24.7	06 04.39
Portmarnock	P	53 25.76	06 06.18
Spit	S	53 24.42	06 04.51
Viceroy	V	53 25.12	06 04.78
West	W	53 24.96	06 06.07

NO.	WIND	COURSE CARD
1	N	Hp, Wp, Ip, Hp, Wp, Is, F.
2	N	Hp, Wp, Ip, Hp, Ip, Hp, Wp, Is, F.
3	N/E	Hp, Wp, Cp, Hp, Wp, Is, F.
4	N/E	Hp, Wp, Cp, Vp, Cp, Hp, Vp, Is, F.
5	E	Dp, Hp, Wp, Ip, Vp, Is, F.
6	E	Dp, Hp, Wp, Ip, Vp, Wp, Is, F.
7	S/E	Ip, Pp, Ip, Dp, Vp, Is, F.
8	S/E	Ip, Pp, Ip, Dp, Pp, Is, F.
9	S	Ip, Dp, Hp, Ip, Dp, Hp, Is, F.
10	S	Ip, Dp, Hp, Ip, Dp, Hp, Ip, Hp, Is, F.
11	S/W	Cp, Ip, Hp, Cp, Hp, Vp, Is, F.
12	S/W	Cp, Dp, Hp, Cp, Dp, Hp, Vp, Is, F.
13	W	Wp, Cp, Ip, Wp, Is, Wp, Is, F.
14	W	Wp, Cp, Dp, Wp, Dp, Wp, Is, F.
15	N/W	Pp, Wp, Cp, Wp, Cp, Wp, Is, F.
16	N/W	Pp, Wp, Ip, Pp, Wp, Cp, Wp, Is, F.