



WITH SUPPORT FROM  
**Comhairle Contae  
Fhine Gall**  
Fingal County  
Council



# LAMBAY RACES 2025

Organised by Howth Yacht Club CLG.  
Saturday 31st May 2025 and Sunday 1st June 2025

## Sailing Instructions

### RACE OFFICERS

Fleet 1: Committee Vessel: North Star. Race Officer: David Lovegrove IRO  
Fleet 2: Committee Vessel: Sea Wych. Race Officer: Derek Bothwell NRO

### TIDAL INFORMATION

Saturday 31 May 2025	LW – 09:14 – 0.66m	HW – 15:44 – 3.51m
Sunday 01 June 2025	LW – 10:12 – 0.86m	HW – 16:40 – 3.33m

## A General Instructions

The notation '[NP]' in a rule of the sailing instructions (SIs) means that a boat may not protest another boat for breaking that rule. This changes RRS 60.1(a).

### A1 - Special Notices

A1.1 - If, due to unsuitable weather, it is not possible to run the Lambay Races on Saturday 31st May, it is the intention of the Race Committee to run the Races on Sunday 1st June. The times of the Warning Signals for Saturday 31st May and all other Sailing Instructions shall be applicable for racing on Sunday.

A1.2 - In the event of adverse weather conditions, the Race Officers may select a course that does not round Lambay.

### A2 - Rules

The races shall be governed by the Racing Rules of Sailing (RRS), Prescriptions of Irish Sailing, the Notice of Race, these Sailing Instructions and any amendments thereto.

Competitors in races for One Design classes shall comply with their relevant Class Rules.

Competitors in IRC, ORC and HPH handicap classes shall comply with the rules of those handicapping systems. In the event of a conflict the Sailing Instructions shall prevail.

RRS Appendix T (Arbitration) will apply.



WITH SUPPORT FROM  
**Comhairle Contae  
Fhine Gall**  
Fingal County  
Council



### A3 - Notices to Competitors

Notices to competitors will be posted on the Official Notice Board located in the archway beside the Marina Office and may be communicated through the Regatta WhatsApp Group.

### A4 - Change of Sailing Instructions

Changes to Sailing Instructions will be posted not later than two hours before the scheduled start of the first race so affected. Changes to the schedule of races, will be posted before 2000hrs on the evening before such change is applicable. Flag L displayed on the flagpole at the top of the marina bridge denotes that a change of Sailing Instructions has been made.

### A5 - Signals Made Ashore

Signals made ashore will be displayed on the flagpole at the top of the marina bridge.

When flag AP is displayed ashore “one minute” is replaced with “not less than 60 minutes” in Race Signal AP. This changes RRS “Race Signals”.

### A6 - Protests

Protests and requests for redress shall be lodged through the Online Protest Portal

[https://www.racingrulesofsailing.org/protests/new?event\\_id=11604](https://www.racingrulesofsailing.org/protests/new?event_id=11604)

Refer to the Appendix 2 for the full set of QR codes, which will be posted on the official noticeboard.

The Protest Time Limit is 90 minutes from the time of finish of the last boat in each of the fleets as appropriate. This time limit shall be extended to two hours in the event of the race being finished at either the Taylor Rock Buoy or the Burren Perch at Lambay Island. These times will be posted on the Online Protest Portal.

Notices of protests by the Race Committee, Technical Committee or Protest Committee will be posted before the end of the protest time limit to inform boats under RRS 61.1(b).

The time and place of Protest Hearings will be initially posted on the Online Protest Portal within 15 minutes of the protest time limit. The listing of a boat on this schedule shall constitute informing her of a hearing under RRS 63.2. Parties involved shall present themselves and their witnesses at the time and place indicated on the schedule. On the last day of scheduled racing a request for a reopening of a hearing under RRS 66 shall be submitted via the Online Protest Portal, as follows:

- Within the protest time limit if the party requesting reopening was informed of the decision on the previous day
- No later than 30 minutes if the party requesting reopening was informed of the decision on that day
- If no racing has taken place that day, no later than 30 minutes after ‘AP over A’ is displayed ashore. This changes RRS 66.

To request correction of an alleged error in posted race or series results, a boat shall complete a scoring enquiry via the Online Protest Portal.

[DP] Penalties for a breach of the class rules may, at the discretion of the protest committee, be less than disqualification.

## A7 - Navigation Marks and Obstructions

The Navigation Marks in and around Howth Sound shall be left as follows –

Mark	To Be Passed...
South Rowan Buoy	West and South
Howth Buoy	South and East
Rowan Rocks Buoy	East and South
HYC Spit Mark	East



Any part of Ireland's Eye or Lambay Island capable of being touched while racing is designated as an obstruction.

When rounding Lambay Island, boats shall pass outside the Taylor Buoy and Burren Perch and are advised to give both a wide berth.

In rounding Lambay Island, Class 0, 1 & 2 shall sail to the West and North of the Malahide mark and to the North and East of North mark.



#### A8 - Howth Harbour and Howth Sound Right of Way [NP] [DP]

Howth Harbour and the Sound are deemed to be 'confined channels' and trawlers, ships and similar craft constrained in their ability to manoeuvre shall be kept clear of by sailing boats.

Accordingly:

- When entering and leaving the harbour, boats shall pass other vessels PORT-TO-PORT.
- Boats shall not impede trawlers, fishing vessels or other large, powered craft that are constrained in their ability to manoeuvre whilst in Howth Sound, the harbour entrance and the fairways to the trawler dock and the HYC marina.

Breach of the above shall be subject to protest.

## A9 - Radio Communications

Competitors are advised to keep a listening watch, on the relevant channel for their Committee Vessel, where information relevant to racing may be broadcast. Should this information be broadcast, it shall not constitute outside assistance and shall not be the subject of a protest. Failure to broadcast this information shall not be the basis for any claim for redress.

The Squib Class Rules are changed by this Sailing Instruction to allow the use of VHF radio.

The Race Committees will communicate with their respective fleets via the following VHF channels:

Committee Vessel	Vessel Name	Primary Channel	Alternative Channel
Fleet 1	North Star	77	08
Fleet 2	Sea Wych	69	68

See section B1 - and C1 - for allocation of classes to fleets.

In the event of a primary channel becoming unserviceable, the relevant Race Committee will broadcast on the designated alternative channel.

[NP] [DP] Competitors who retire from a race shall inform the Race Committee promptly by radio on Channel 77 or 69 as appropriate to the fleet they were assigned to, or the alternative channel if the primary is not in use.

Competitors without radio should inform the Race Office or HYC Marina Office on coming ashore.

## A10 - Emergency Procedures Afloat

If an incident occurs during the Regatta the following procedure should be followed:  
Go to VHF Channel 16 and broadcast the appropriate message from the list below three times:

1. MAYDAY if the boat is in distress
2. PAN PAN if the boat requires outside assistance, including medical assistance
3. In every case, state:
  - The nature of the incident / injury
  - The name and position of the boat

Other issues can be reported to the Committee Vessel for the fleet the boat is competing in, using the designated VHF Channel for the fleet, and the Race Officer advised of the incident.

#### A11 - The following pennants shall identify the Classes:

Class 0	Numeral 0
Class 1	Numeral 1
Class 2	Numeral 2
Class 3	Numeral 3
Non-Spinnaker 1	Numeral 4
Non-Spinnaker 2	Numeral 5

The same numeral flags will be used by the Race Committee as the Class flag for each Fleet. Boats shall display prominently their Class pennant from their backstay at all times while racing.

Any boat not doing so shall be scored DNF, this changes RRS 63.1 and RRS Appendix A5 (scores determined by the Race Committee).

Other boats not in Classes 0-5 are not required to display Class pennants.

#### A12 - Class Allocations & Series:

Class allocations and splits will be advised at the latest by 9:00am on Thursday 28<sup>th</sup> May.

#### A13 - Schedule of Races:

##### **Saturday 31 May:**

Fleet 1: One race Lambay Race (Committee Vessel North Star)

Fleet 2: One race Lambay Race (Committee Vessel Sea Wych)

##### **Sunday 01 June:**

Fleet 1: Three races are scheduled (Windward/Leeward, Committee Vessel North Star)

Fleet 2: Two races are scheduled (Round the Cans, Committee Vessel Sea Wych)

The Race Committee may, at its discretion, amend the above schedule depending on the prevailing weather conditions.

#### A14 - Starting Area

The starting area for all courses will be North and/or West of Ireland's Eye. The Committee Vessels will broadcast their positions on the relevant VHF Channels

#### A15 - Starting Lines

The starting line shall be between a red/white pole (or main mast) on a Committee Vessel (to be passed to starboard) that will display an orange flag and dan-buoy type start mark.

#### A16 - Starting Sequence

The start sequence will be per RRS26 with the Warning signal raised five minutes before the Starting signal.

The race committee will endeavour to call out the sail numbers of OCS boats no sooner than one minute after their start. However, failure to do so shall not be a basis for a Redress





WITH SUPPORT FROM  
**Comhairle Contae  
Fhine Gall**  
Fingal County  
Council



claim, which changes RRS61.1(a).

### A17 - Re-crossing Start/Finish Lines [NP][DP]

All boats shall keep clear of the starting line until their warning signal. Boats, having started and cleared their starting line, shall not re-cross that line while starts are in progress. Boats shall not cross any other starting line while starts are in progress.

Boats shall not cross any finishing lines other than their own when the Committee Vessel on station at the end of the line encountered is displaying a Blue or an S flag. Competitors are requested to avoid interfering with boats that may be attempting to finish on such finish lines.

### A18 - Starting Time Limit

A boat starting later than ten minutes after her starting signal will be scored DNS. This changes RRS Appendix A4.1.

### A19 - Course Designation:

The course to be sailed by a Class will be signalled no later than the Preparatory Signal for that Class. This changes RRS 27.1.

- Round the Cans course will be indicated by displaying IC Flag R
- Windward/Leeward course will be indicated by displaying IC Flag W

### A20 - Prize Giving

The approximate time of the prize-giving for the Lambay Races will be 18:00 on Saturday 31 May.

The prize-giving for the races on Sunday 01 June will be held on at 18:00.

### A21 - Safety

Competitors participate entirely at their own risk; see Fundamental Rule 3, Decision to Race and the Irish Sailing Safety Booklet. Open boat entrants are referred to relevant Class regulations.

It is recommended that each crew member shall wear a PFD (personal flotation device). If flag Y is displayed, then RRS40.1 shall apply and all crew members shall wear a PFD.

Competitors' attention is also drawn to RRS Part 1 (Fundamental Rules) and the Irish Sailing safety booklet.

Boats shall carry adequate life-saving equipment for all persons on board equipment.

The responsibility for the safety of competing boats and their crews lies solely with the said competitors. Howth Yacht Club CLG. and/or the Organising Committee will not accept any liability for material damage, personal injury or death sustained in conjunction with, prior to, during, or after racing.

### A22 - Insurance



WITH SUPPORT FROM  
**Comhairle Contae  
Fhine Gall**  
Fingal County  
Council



Each participating boat shall be insured with adequate, appropriate, valid, third-party liability insurance, valid for the duration of the Lambay Races event.




## B LAMBAY RACES


### This Changes the Notice of Race

Section B supplements Section A for the Lambay Races, in the event of a conflict, Section B shall be deemed to take precedence for the Lambay Races.

### B1 - Start Sequence:

<b>Fleet 1 – North Star</b>	<b>Flag</b>	<b>Start</b>	
Class 0	No. 0	12:00	
Class 1	No. 1	12:05	
Class 2	No. 2	12:10	
Class 3	No. 3	12:15	

Fleet 2 – Sea Wych	Flag	Start
Puppeteers	A	11:00
Ruffians	Q	11:05
Squibs	K	
Howth 17	C	11:10
Class 4 – Non-Spinnaker	No. 4	12:00
Class 5 – Non-Spinnaker	No. 5	12:05



### Note:

- One Designs start from 11:00
- Cruiser Classes start from 12:00, due to low tide at 09:14 on that morning

## B2 - Course Designation

B2.1 - The courses to be sailed will be selected from the marks indicated on Appendix I to these sailing instructions.

B2.2 - A Windward mark will be laid approximately to windward of the Committee vessel.

(1) Fleet 1 – North Star

(a) Classes 0 and 1 – Yellow

(b) Classes 2 and 3 – Black

(2) Fleet 2 – Sea Wych - Black

B2.3 - This shall be rounded to Port as the first mark in all races, Thereafter, boats shall sail to the first mark as indicated on the course displayed and continue to sail around the marks in the order as displayed.

B2.4 - Should the Committee vessel be displaying a White Flag, boats shall disregard the Windward mark (or it may not be laid) and sail directly to the first mark on the course as displayed.

B2.5 - The course to be sailed will be displayed on the committee boat and broadcast on VHF Channel 77 for North Star and 69 for Sea Wych.

B2.6 - In rounding Lambay Island, Class 0, 1 & 2 shall sail to the West and North of the Malahide mark and to the North and East of North mark.

## B3 - Shortened course: RRS 32 shall apply.

## B4 - Finishing Line

Unless the course is shortened, there will be two finish lines:

Fleet 1 - Classes: 0, 1, 2, and 3 will finish in the vicinity of the Rowan Rocks Buoy and the finish line will be between a red/white pole (or mainmast) displaying a blue flag on the committee vessel which shall be left to starboard and the finish mark.

Fleet 2 - Classes: 4, 5, Puppeter, Squib, Howth 17 and Ruffian will finish in the vicinity of Howth Sound and the finish line will be between a red/white pole (or mainmast) displaying a blue flag on the committee vessel which shall be left to starboard and the finish mark.

## B5 - Time Limits:

The Time Limit for all fleets for the Lambay Races is 17:00. If a boat in a Class finishes within this limit, the time limit for that Class shall be extended to 17:30.

In the event of postponement(s) and/or general recall(s), the time limit(s) for races so affected shall be correspondingly extended.



A boat that fails to finish within the above time limits will be scored 'DNF' without a hearing. This changes RRS 35, RRS 63.1, RRS Appendix A4 and A5.

## **C : SUNDAY RACES**

### **This Changes the Notice of Race**

Section C supplements Section A for the Sunday Races, in the event of a conflict, Section C shall be deemed to take precedence for the Sunday Races.

### **C1 - Intended Start Sequence and Times – Sunday 01 June:**

<b>Fleet 1 – North Star</b>	<b>Flag</b>	<b>Start</b>	
Class 0	No. 0	13:00	
Class 1	No. 1	13:05	
Class 2	No. 2	13:10	
<b>Fleet 2 – Sea Wych</b>	<b>Flag</b>	<b>Start</b>	
Class 4 – Non-Spinnaker	No. 4	13:00	

The Race Committees will use VHF to notify the Fleets of the respective courses of the approximate time for commencement of the starting sequence for races after the first races on Sunday.

### **C2 - Windward/Leeward course:**

The number of rounds to be sailed on the windward/leeward course will be signalled by the display of a number board on the Committee Vessel and will indicate as follows - marks to be rounded to port (with the exception of the gate) in the following order:

No 1: 1-2-G-F

No 2: 1-2-G-1-2-G-F

No 3: 1-2-G-1-2-G-1-2-G-F

For Class 0, a yellow inflatable mark will be laid to windward of Marks 1 & 2 and called Mark 0. For Class 0, marks to be rounded to port (with the exception of the Gate) in the following order:

No 1: 0-G-F

No 2: 0-G-0-G-F

No 3: 0-G-0-G-0-G-F

In the above courses, Mark G indicates a leeward gate, as per the indicative course diagram. Should both gate marks not be laid, boats shall regard the single mark as a port rounding mark.



### C3 - Change of Course:

To maintain the integrity of the course, the Race Committee may make small changes to the positions of the marks. These will not be signalled. This changes RRS 33.

### C4 - Description of Marks for Windward/Leeward Courses:

- Course marks:
  - These will normally be black inflatable marks for Classes 1 & 2.
  - For Class 0, Mark 0 will be a yellow inflatable mark.
- Finish mark: This will normally be a small orange spherical mark.

### C5 - Round the Cans Courses:

The courses to be sailed on the Round the Cans races will be selected from the marks indicated on Appendix 1 which shall form part of these Sailing Instructions.

The course will be called out on the VHF Radio and displayed on a blackboard in the format:-

Z – H – V – D – F

For all Round the Cans races the Windward mark (Z), a large orange inflatable, will be laid approximately to windward of the Committee vessel.

This shall be left to Port as the first mark on the course.

Thereafter, boats shall sail to the first mark as indicated on the course displayed and continue to sail around the marks in the order as displayed.

Marks shall be left to Port, unless they are underlined on the blackboard, in which case they will be left to Starboard.

Should the Committee vessel be displaying a White Flag, boats shall disregard the Windward mark (or it may not be laid) and sail directly to first mark on the course as displayed.

### C6 - Shortened course:

C6.1 - For the Round the Cans races, RRS 32 shall apply.

C6.2 - For Windward/Leeward, in addition to the provisions of RRS 32, the course may be shortened by the Race Committee positioning a mark boat at either Mark 2 (Mark 0 for Class O) or G, displaying IC Flag F and making sound signals. Boats shall then sail directly to the finish line from that mark.



WITH SUPPORT FROM  
**Comhairle Contae  
Fhine Gall**  
Fingal County  
Council



## C7 - Finish Lines

The finishing line, unless shortened, will be between the red and white pole or mainmast displaying a blue flag on the finishing vessel and the finishing mark.

For Windward/Leeward races, the finish line will be as shown on the course diagram.

For Round the Cans races, the finish line will be approximately upwind of the last mark on the course.

For the last Round the Cans race of the day, the finish line may be in Howth Sound, in which case, the last mark on the course will be the Spit and the finish line will not necessarily be to windward of that mark

NOTE: the finishing vessel may be different to the start vessel.

## C8 - Time Limits:

The time limits shall be as follows:

Fleets 1 and 2: the time limit for all races shall be 20 minutes after the first boat of that class sails the course and finishes.

## C9 - Scoring:

Two of the three windward-leeward races scheduled for Sunday 01 June 2025 are required to be completed to constitute a series.

The Lambay Races on the Saturday are not part of that series.

## **APPENDIX 1**

### **Mark Descriptions and Approximate Positions**

<b><u>ID</u></b>	<b><u>Description</u></b>	<b><u>Shape</u></b>	<b><u>Colour</u></b>	<b><u>Lat. (N)</u> <u>Deg Min</u></b>	<b><u>Long. (W)</u> <u>Deg Min</u></b>
A	Apex	Conical	Black	53 26.76	06 03.26
C	Cush	Conical	Black	53 24.61	06 05.45
D	Dunbo	Conical	Yellow	53 24.73	06 03.85
E	East	Conical	Black	53 26.00	06 02.20
FB	Howth Sound Finish	Inflatable	Black	53 24.20	06 04.29
G	Garbh	Conical	Black	53 25.00	06 02.32
H	Hub	Conical	Black	53 25.71	06 04.43
I	Island	Conical	Black	53 24.70	06 04.36
J	Thulla	Conical	Black	53 23.80	06 03.40
K	Stack	Conical	Black	53 24.60	06 03.11
L	Lambay Island				
M	Malahide	Inflatable	Orange	53 31.00	06 02.00
N	North	Inflatable	Orange	53 31.00	06 00.00
O	Osprey	Conical	Orange	53 25.41	06 03.52
P	Portmarnock	Conical	Black	53 25.63	06 05.80
Q	Rowan Rocks	IALA	Black	53 23.88	06 03.22
R	South Rowan	IALA	Green	53 23.78	06 03.88





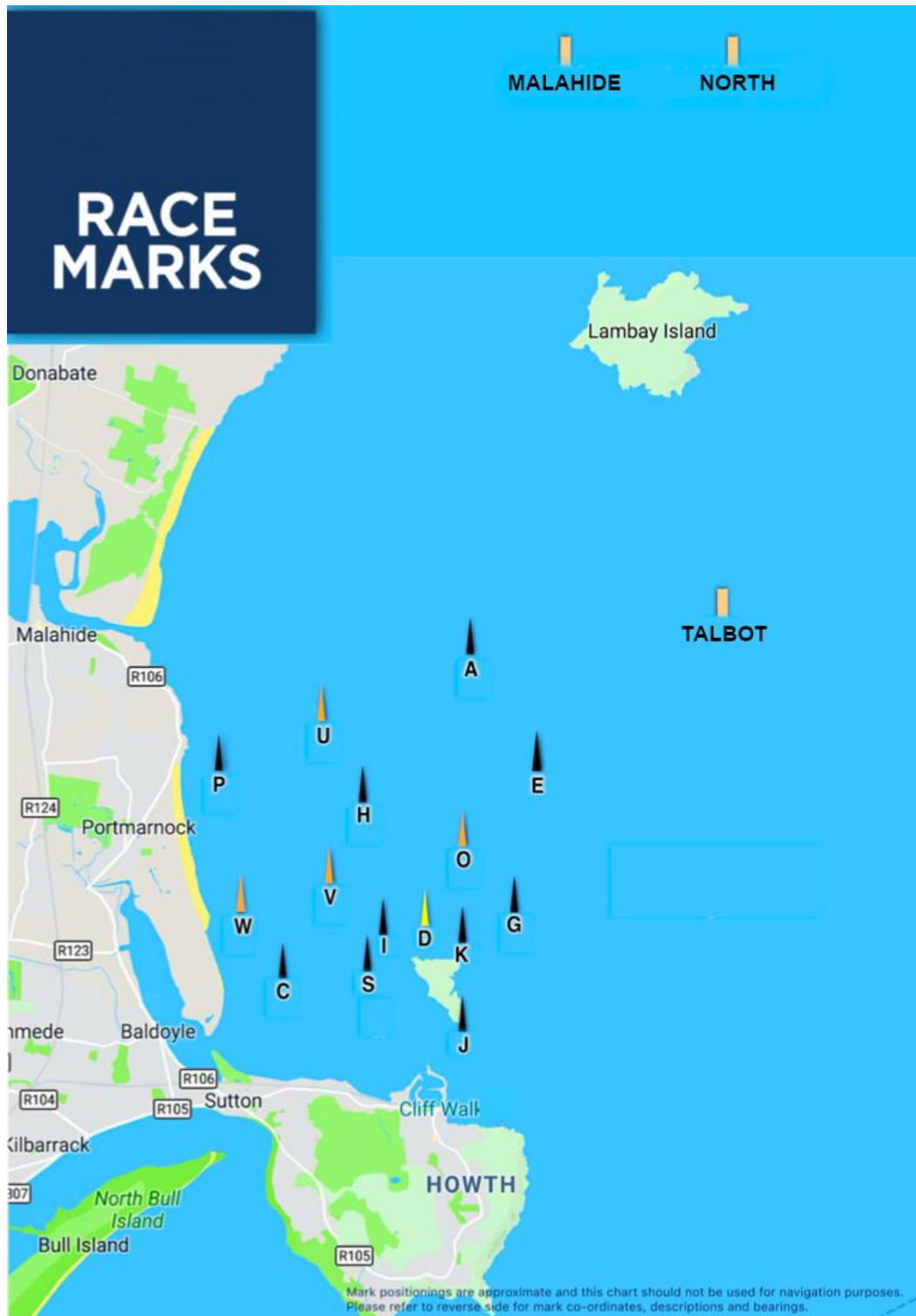
WITH SUPPORT FROM  
**Comhairle Contae  
Fhine Gall**  
Fingal County  
Council



<u>ID</u>	<u>Description</u>	<u>Shape</u>	<u>Colour</u>	<u>Lat. (N)</u> <u>Deg Min</u>	<u>Long. (W)</u> <u>Deg Min</u>
S	Spit	Conical	Black	53 24.35	06 04.48
T	Talbot	Inflatable	Orange	53 26.00	06 00.00
U	Ulysses	Conical	Orange	53 26.22	06 04.97
V	Viceroy	Conical	Orange	53 25.12	06 04.78
W	West	Conical	Black	53 24.9641	06 06.07
Y	Ireland's Eye				
	Taylor Buoy	North Cardinal		53 30.13	06 01.52
	Burren Perch	West Cardinal		53 29.21	06 02.28

*The above locations are the planned positions of marks. Weather, tide and other factors may result in the actual locations varying from the listed positions so locations shall be treated as indicative rather than definitive.*

## RACE MARKS



## **APPENDIX 2**



### **Lambay Races**

#### **Links to Public Information**

Regatta officials are using a web-based program to assist with the management of this regatta. It provides electronic forms for such actions as scoring inquiries, protests, equipment substitutions, etc. And it provides for electronic communication with competitors if competitors have provided an email and/or telephone number accepting SMS. Competitors will be notified electronically of protest time limits, confirmation of a protest filing, scheduled hearing times, etc. This electronic system allows competitors to move freely about the event and remain in contact with relevant officials. And all competitors have electronic access to the scoring inquiries, jury decisions, etc.\*

**Notice: The Official Notice Board (ONB) is still the only official source of information for this regatta.**



**Submit Request for Hearing**



**Submit Scoring Inquiry**

**NOTICE:** When submitting a protest, request or report, the procedure (as set forth in the Racing Rules of Sailing and the Sailing Instructions) remains unchanged.



**Hearing Schedule**



**Hearing Decisions**



**Scoring Inquiries**

The jury and parties reserve the right to limit public access to certain decisions.\*



WITH SUPPORT FROM  
**Comhairle Contae  
Fhine Gall**  
Fingal County  
Council

