



# SAAB CRUISER NATIONALS 2008



		1	2	3	4	5	6
	00	Z W I H I F 5.5	Z W C P W I F 6.6	Z U P W P C I F 8.0	Z C I U I H C I 9.5	Z C I U P W P W C I F 10.5	Z W C I U I U P C I F 12.6
	01	Z W C P W C F 6.24	Z W C U P W C F 7.9	Z W C U V H P W C F 9.8	Z W C U P W P W C F 10.2	Z W C U C I H P W C F 12.0	Z W C U C I H I H P W C F 14.4
	02	Z C H W C F 6.0	Z W C H W C F 6.9	Z W C H C V W C F 8.4	Z W C H C H W C F 10.0	Z W C U C H W C F 11.0	Z W I C H C H C U W C F 14.0
	03	Z W C H C F 6.0	Z W C H W C F 6.9	Z W C H C V W C F 8.7	Z W C H C H W C F 10.3	Z W C U C H W C F 11.0	Z W C H C H C U W C F 14.1
	04	Z C H W C F 6.0	Z W C H W C F 6.9	Z W C H C V W C F 8.7	Z W C H C H W C F 10.0	Z W C H C V C H W C F 12.1	Z W I E I E W C F 13.3
F-1 E+1	05	Z W C V W C F 5.3	Z W C O W C F 6.9	Z W C O H W C F 8.6	Z W C H W H W C F 10.0	Z W C O H W H W C F 11.6	Z W C O I E W C F 13.3
F-1 E+1	06	Z V W H W C F 6.1	Z W C O V C F 6.7	Z H W C O V C F 7.8	Z V W C O I O V C F 9.0	Z V W C O C O V C F 10.3	Z O H W C O C O H W C F 12.8
F-1 E+1	07	Z V W H W C F 6.1	Z V C D C D V C F 7.6	Z V W H W H C F 8.7	Z V W C O C O V C F 10.3	Z O H W C O C O V C F 11.9	Z V W C O C E W C F 13.2
F-1 E+1	08	Z V C D V C F 5.4	Z V C D C D V C F 7.6	Z V W O W V W C F 8.9	Z V C D V W O W C F 9.8	Z V W O U W O W C F 11.8	Z V W C G H W O W C F 13.1
F-1 E+1	09	Z V C D V C F 5.4	Z V W V W V W C F 7.0	Z V C D C D V W C F 8.6	Z V W O W V W C F 9.6	Z V W O C K V C F 10.8	Z V W O W C G V W C F 13.3
F-1 E+1	10	Z V W I V W F 5.4	Z V W I W I V W F 7.3	Z V W D W I V W F 8.5	Z D V W D W I V W F 9.4	Z V W D W K V W F 10.4	Z V W D W D V W D V W F 12.7
F-1 E+1	11	Z V W I V W F 5.4	Z V W I W I V W F 6.1	Z V W I W I V W F 7.6	Z D V W D W I V W F 9.4	Z V W D W K V W F 10.4	Z V W D W D V W D V W F 12.7
F-1 E+1	12	Z V W I V W F 5.4	Z V W I W I V W F 7.6	Z V W I W V W F 8.5	Z V W D W D H W F 10.2	Z V W D W D W I V W F 11.8	Z V W D W D V W K V W F 13.8
F-1 E+1	13	Z P I V W F 5.7	Z H P I V W F 6.4	Z H P D V W F 7.7	Z H P D V D V W F 9.4	Z V P D O U O H W F 11.2	Z H P D P D V W F 12.3
F-1 E+1	14	Z V W C W C W F 5.6	Z H P I V W F 6.4	Z H P D V W F 7.7	Z V P I V W C V W F 9.0	Z I P I P I V W F 10.5	Z V P D P D H W F 12.6
	15	Z V W C V W F 5.6	Z V P I V W F 6.7	Z I P D V W F 7.5	Z I P I V W C V W F 9.2	Z V P I P I V W F 10.5	Z V P D P D H W F 12.7
	16	Z V P C V F 5.7	Z V P C W C V F 7.2	Z V P C W C V F 7.8	Z V P C P C V F 9.6	Z I U D H P C Y F 10.8	Z I U D H D P C V F 13.3
	17	Z V P C V F 6.0	Z V P C V I V F 7.2	Z V P W P C V F 8.3	Z V P C P C V F 10.0	Z V P C I H I O H V F 11.5	Z V P C I U I U V F 13.0
	18	Z V P W V F 5.4	Z V P W P W V F 7.4	Z V P W P C V F 8.5	Z V P C I H I H V F 10.3	Z V P C I U I H V F 11.6	Z V P C I U I U V F 13.0
	19	Z I H I H V F 6.0	Z V P W P W V F 7.4	Z V P W H I H V F 9.1	Z V P W U C H V F 10.5	Z I U C U C H V F 12.2	Z V P W U C U C V F 13.4
	20	Z I H C I V F 5.9	Z I H C H V F 7.2	Z I H C H C I V F 9.2	Z I H C H C I H V F 10.9	Z I U W U W I H V F 12.1	Z I U W U W I H C I V F 13.3
	21	Z I H C I V F 5.9	Z I H C H V F 7.2	Z I H C V C I H V F 9.3	Z I H C U W C I V F 10.5	Z I U W U W C I H V F 12.4	Z I U W U W I H C I V F 13.3
F+1 E-1	22	Z V C V C V F 5.2	Z I V C V C I V F 6.4	Z I H C V C I V F 7.5	Z I H C V C I H V F 9.3	Z I H C U W I V F 10.2	Z I U W U W I H V F 12.0
F+1 E-1	23	Z V C V C V F 5.2	Z C O C V F 6.0	Z C O C O I V F 8.6	Z C H W H W C V F 9.2	Z C O C V C O I V F 10.3	Z C O C O C O C V F 13
F+1 E-1	24	Z C H W C V F 6.0	Z C V C O I V F 6.8	Z C H W C O I V F 8.7	Z C O C O H W C V F 10.2	Z I H W H W C O I V F 11.5	Z C O C O H W H W C V F 13.4
F+1 E-1	25	Z C D C I V F 5.2	Z I H W C I V F 6.5	Z C O C O V F 8.0	Z I O C O C I V F 9.7	Z C O C O C O V F 11.5	Z I H W H W C O C I V F 13.0
F+1 E-1	26	Z I V W C V F 5.1	Z C V W V W C V F 7.0	Z C D C D C I V F 7.7	Z C D C D C O V F 9.2	Z C O W O W C I V F 11.0	Z C O W O W C D C I V F 13.2
F+1 E-1	27	Z C V W C V F 5.4	Z C V W V W C V F 6.5	Z C D C D C I V F 7.7	Z C O W C D C I V F 9.4	Z C O W O W C I V F 11.0	Z C O W O W C D C I V F 13.3
F+1 E-1	28	Z C I W C I F 5.0	Z C I W I W C I F 6.9	Z C D W I W C I F 8.0	Z C D W D W C I F 9.1	Z C D W K W C I F 10.2	Z C K W K W C D I F 12.2
F+1 E-1	29	Z C I W C I F 5.0	Z C I W I W C I F 6.9	Z C D W I W C I F 8.0	Z C D W D W C I F 9.1	Z C D W K W C I F 10.2	Z C K W K W C D I F 12.2
F+1 E-1	30	Z C I W C I F 5.0	Z C I W I W C I F 7.1	Z C D W I W C I F 8.0	Z C D W D W C I F 9.1	Z C D W K W C I F 10.2	Z C K W K W C D I F 12.2
F+1 E-1	31	Z C D V C I F 5.2	Z C I P C I F 6.1	Z C D V K V C I F 7.8	Z C D P D V C I F 9.6	Z C K P D V C I F 10.7	Z C D P D P C I F 12.2
F+1 E-1	32	Z W C W C I F 4.5	Z P W C W C I F 6.3	Z W C I P W C I F 7.5	Z P I P W C I F 8.9	Z C I P I P W C I F 10.7	Z W C I P V P V P W C F 13.0
	33	Z W C W C I F 4.5	Z P W C W C I F 6.3	Z W C I P W C I F 7.5	Z P W C I P W C I F 8.9	Z C I P I P W C I F 10.7	Z W C I P V P V P W C F 13.0
	34	Z W C W C I F 4.5	Z W C P C I F 6.7	Z W C W C P C I F 8.1	Z W C P C P W C I F 10.3	Z P W C P C P W C I F 12.0	Z W C P C P C P W C I F 13.7
	35	Z C I V C I F 4.6	Z W C P C I F 6.7	Z W C P I V C I F 8.3	Z W C P C P W C I F 10.2	Z C I U I U C I F 10.9	Z C D H D H W C P C I F 13.1
	40	Z Gy L F	Z Gy L Z L F	Z Gy L Z L Z Gy L F	Z Gy L Z L Z Gy L Z L F		

Mark F on Committee boat courses refers to the Red Finish Mark (S.I. 3.6)  
 All marks are rounding marks except for those in a   (box) which are passing marks  
 Marks coloured red shall be rounded/passed to port  
 Marks coloured green shall be rounded/passed to starboard  
 Courses were designed with the aid of Soft Touch Programmes



# SAAB CRUISER NATIONALS 2008



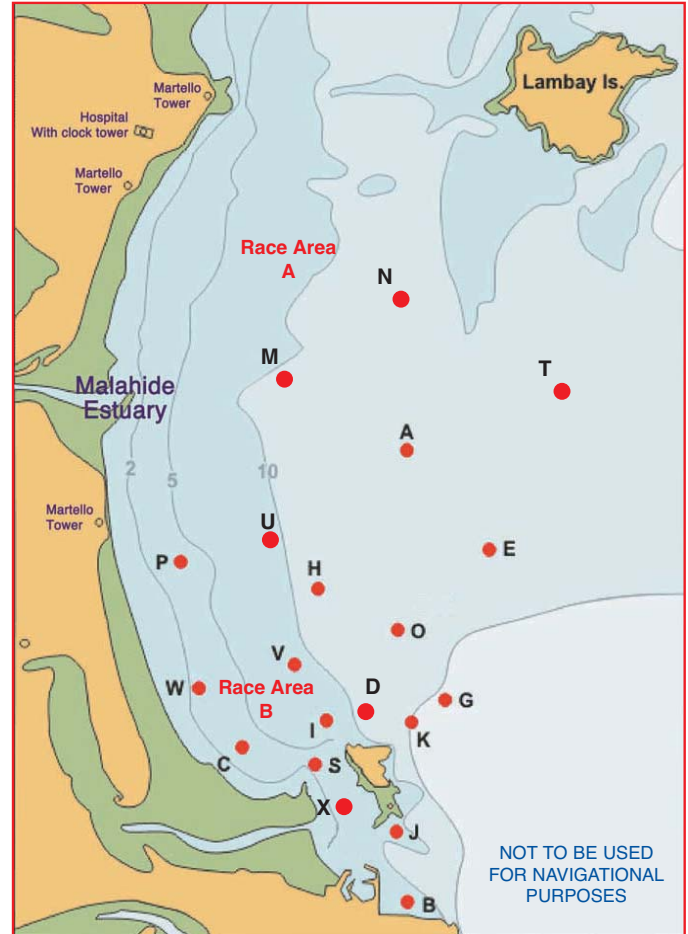
## MARK DESCRIPTIONS/POSITIONS (Approx)

ID	Name	Shape	Colour	Latitude (N)		Longitude (W)	
				Deg	Min	Deg	Min
A	Apex	Conical	Black	53	26.76	06	03.26
B	Balscadden	Conical	Orange	53	23.30	06	03.26
C	Cush	Conical	Black	53	24.50	06	05.44
D	Dunbo	Conical	Yellow	53	24.73	06	03.85
E	East	Conical	Black	53	26.00	06	02.20
F	Finish	Cylindrical	Red	Upwind of Last Mark			
G	Garbh	Conical	Black	53	25.00	06	02.32
H	Hub	Conical	Black	53	25.71	06	04.43
I	Island	Conical	Black	53	24.70	06	04.36
J	Thulla	Conical	Black	53	23.80	06	03.40
K	Stack	Conical	Black	53	24.60	06	03.11
M	Malahide	Conical	Black	53	27.23	06	05.59
N	North	Conical	Black	53	27.99	06	03.40
O	Osprey	Conical	Orange	53	25.41	06	03.52
P	Portmarnock	Conical	Black	53	25.89	06	06.30
Q	Rowan Rocks	IALA	Black	53	23.88	06	03.22
R	South Rowan	IALA	Green	53	23.78	06	03.88
S	Spit	Conical	Black	53	24.35	06	04.48
T	Talbot	Conical	Black	53	27.31	06	01.30
U	Ulysses	Conical	Orange	53	26.22	06	04.97
V	Viceroy	Conical	Orange	53	25.12	06	04.78
W	West	Conical	Black	53	24.96	06	06.07
X	Xebec	Barrel	Black	53	24.12	06	04.33
Z	Zephyr	Inflatable	Black	Upwind of Start Line			

## Course Selection-

The first two boards indicate the beat e.g. 07=070°

The third board indicates the column number across the top of the card.



## High / Low Water Houth

May 16th	0951 1554	3.6m 0.9m
May 17th	1034 1632	3.7m 0.8m
May 18th	1114 1707	3.7m 0.8m

Warning Signal each day at 10.55

## Race Marks 2008 - Relative Bearings - Magnetic (approx)

	A	B	C	D	E	G	H	I	J	K	M	N	O	P	Q	S	T	U	V	W	X
A		186°	216°	196°	146°	168°	220°	207°	188°	184°	295°	002°	192°	250°	185°	203°	071°	248°	215°	229°	200°
B	006°		319°	352°	019°	024°	350°	336°	357°	010°	347°	005°	002°	331°	010°	331°	022°	347°	340°	321°	328°
C	036°	139°		084°	058°	081°	032°	077°	126°	092°	004°	025°	058°	346°	121°	111°	047°	015°	038°	327°	127°
D	016°	172°	264°		043°	078°	347°	272°	170°	110°	344°	011°	023°	315°	161°	233°	036°	342°	312°	287°	212°
E	326°	199°	238°	223°		190°	264°	233°	204°	207°	307°	346°	238°	273°	202°	225°	028°	284°	246°	252°	220°
G	348°	204°	261°	258°	010°		305°	263°	214°	236°	325°	354°	306°	297°	211°	249°	021°	314°	281°	275°	239°
H	040°	170°	212°	167°	084°	125°		191°	168°	151°	342°	021°	125°	285°	164°	187°	055°	334°	205°	238°	184°
I	027°	156°	257°	092°	053°	083°	011°		148°	101°	353°	018°	048°	326°	140°	177°	043°	357°	350°	293°	172°
J	008°	177°	306°	350°	024°	034°	348°	328°		018°	345°	006°	004°	326°	062°	317°	026°	345°	334°	312°	305°
K	004°	190°	272°	290°	027°	056°	331°	281°	198°		337°	003°	350°	310°	190°	259°	028°	332°	304°	288°	242°
M	115°	167°	184°	164°	127°	145°	162°	173°	165°	157°		066°	152°	204°	163°	173°	094°	166°	173°	193°	172°
N	182°	185°	205°	191°	166°	174°	201°	198°	186°	183°	246°		187°	225°	184°	196°	125°	214°	202°	214°	194°
O	012°	182°	238°	203°	058°	126°	305°	228°	184°	170°	332°	007°		292°	180°	215°	040°	319°	256°	260°	207°
P	070°	151°	166°	135°	093°	117°	105°	146°	146°	130°	024°	045°	112°		143°	151°	071°	073°	136°	178°	153°
Q	005°	190°	301°	341°	022°	031°	344°	320°	242°	010°	343°	004°	360°	323°		308°	024°	342°	329°	308°	295°
S	023°	151°	291°	053°	045°	069°	007°	357°	137°	079°	353°	016°	035°	331°	128°		039°	357°	353°	309°	166°
T	251°	202°	227°	216°	208°	201°	235°	223°	206°	208°	274°	305°	220°	251°	204°	219°		249°	229°	236°	215°
U	068°	167°	195°	162°	104°	134°	154°	177°	165°	152°	346°	034°	139°	253°	162°	177°	069°		180°	213°	176°
V	035°	160°	218°	132°	066°	101°	025°	170°	154°	124°	353°	022°	076°	316°	149°	173°	049°	000°		264°	171°
W	049°	141°	147°	107°	072°	095°	058°	113°	132°	108°	013°	034°	080°	358°	128°	129°	056°	033°	084°		135°
X	020°	148°	307°	032°	040°	059°	004°	352°	125°	062°	352°	014°	027°	333°	115°	346°	035°	356°	351°	315°	