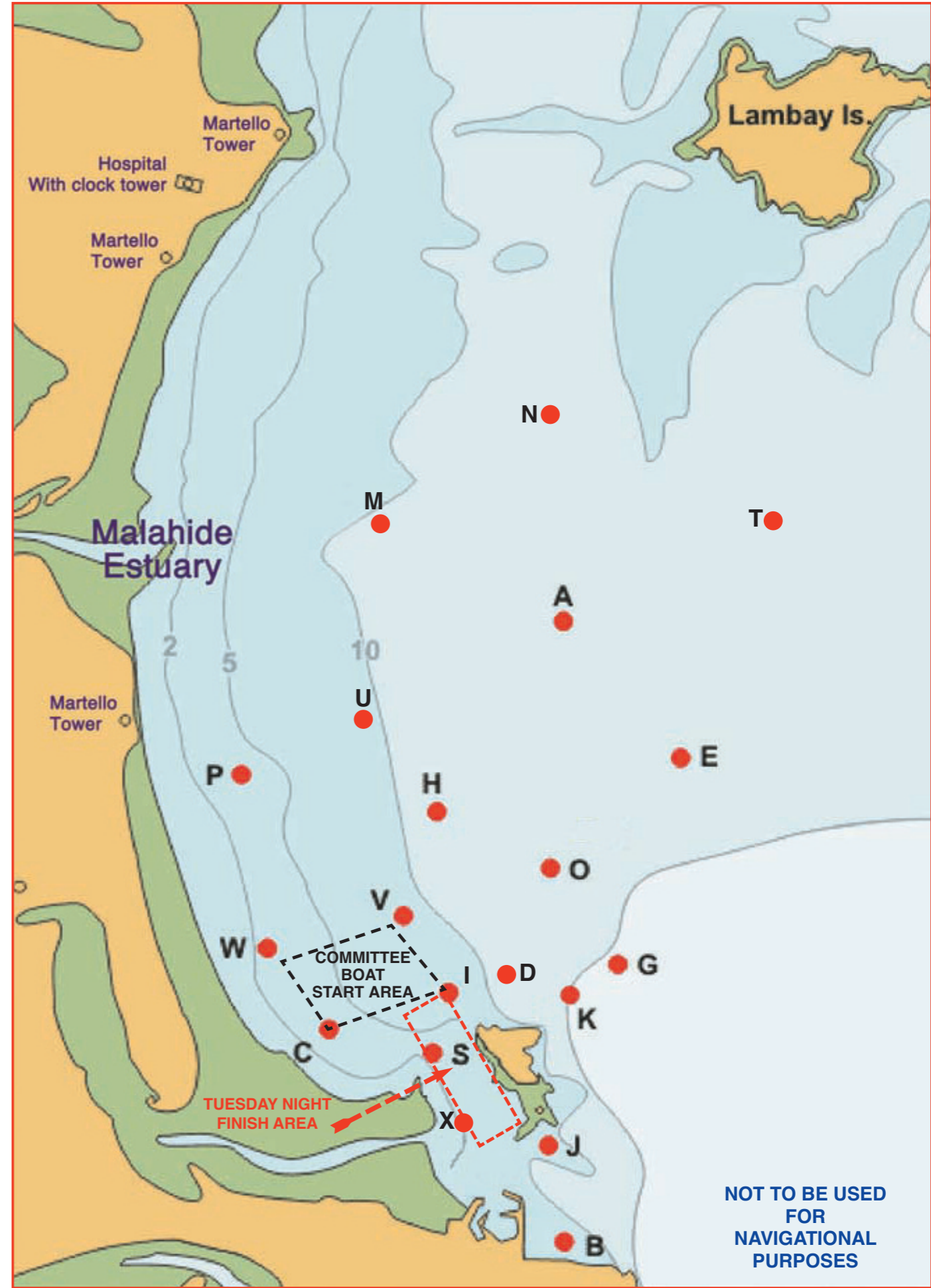


WEDNESDAY

HYC COMMITTEE BOAT COURSE CARD 2010

	1	2	3	4	5	6
00	ZWIHIF 5.5	ZWCPCWIF 6.6	ZUPWPCIF 8.0	ZCIUIHCI 9.5	ZCIUPWPW 10.5	ZWCUIIUP 12.6
01	ZWCPCWCF 6.24	ZWCUPWCF 7.9	ZWCUVHPW 9.8	ZWCUPWPW 10.2	ZWCUCIHP 12.0	ZWCUCIHI 14.4
02	ZCHWCF 6.0	ZWCHWCF 6.9	ZWCHCVWC 8.4	ZWCHCHW 10.0	ZWCUCHWC 11.0	ZWICHCHC 14.0
03	ZWCHCF 6.0	ZWCHWCF 6.9	ZWCHCVWC 8.7	ZWCHCHW 10.3	ZWCUCHWC 11.0	ZWCHCHCU 14.1
04	ZCHWCF 6.0	ZWCHWCF 6.9	ZWCHCVWC 8.7	ZWCHCHW 10.0	ZWCHCVC 12.1	ZWIEIEW 13.3
F-1 E+1	ZWCVWCF 5.3	ZWCOWCF 6.9	ZWCOHWCF 8.6	ZWCHWH 10.0	ZWCOHWH 11.6	ZWCOIEW 13.3
F-1 E+1	ZVWHWCF 6.1	ZWCOCVCF 6.7	ZHWCOV 7.8	ZWCOIOV 9.0	ZVWCOCOV 10.3	ZOHWCOCO 12.8
F-1 E+1	ZVWHWCF 6.1	ZVCDVDVCF 7.6	ZVWHWHCF 8.7	ZVWCOCOV 10.3	ZOHWCOCO 11.9	ZVWCOCV 13.2
F-1 E+1	ZVCDVCF 5.4	ZVCDVDVCF 7.6	ZVWOWVW 8.9	ZVCDVWOW 9.8	ZVWOUWO 11.8	ZVWCGHWO 13.1
F-1 E+1	ZVCDVCF 5.4	ZVWVWVW 7.0	ZVCDVDVW 8.6	ZVWOWVW 9.6	ZVWOCKVC 10.8	ZVWOWC 13.3
F-1 E+1	ZVWIVWF 5.4	ZVWIVWF 7.3	ZVWDWIVW 8.5	ZVWIVWF 9.4	ZVWDWKV 10.4	ZVWDWDV 12.7
F-1 E+1	ZVWIVWF 5.4	ZVWDVWF 6.1	ZVWIVWF 7.6	ZVWDVWF 9.4	ZVWDWKV 10.4	ZVWDWDV 12.7
F-1 E+1	ZVWIVWF 5.4	ZVWIVWF 7.6	ZVWIVWF 8.5	ZVWDWDVW 10.2	ZVWDWDV 11.8	ZVWDWDV 13.8
F-1 E+1	ZPIVWF 5.7	ZHPIVWF 6.4	ZHPDVWF 7.7	ZHPDWDVW 9.4	ZVPDOUO 11.2	ZHPDPDV 12.3
F-1 E+1	ZVWCWCW 5.6	ZHPIVWF 6.4	ZHPDVWF 7.7	ZVPIVWCV 9.0	ZIPIPIVWF 10.5	ZVPDPDW 12.6
15	ZVWCVWF 5.6	ZVPIVWF 6.7	ZIPDVWF 7.5	ZIPIVWCV 9.2	ZVPIPIVWF 10.5	ZVPDPDW 12.7
16	ZVPCVF 5.7	ZPCWCVF 7.2	ZVPCWCVF 7.8	ZVPCPCVF 9.6	ZIUDHPCV 10.8	ZIUDHPC 13.3
17	ZVPCVF 6.0	ZVPCVIVF 7.2	ZVPWPCVF 8.3	ZVPCPCVF 10.0	ZVPCIHIOH 11.5	ZVPCIUU 13.0
18	ZVPWFV 5.4	ZVPWPWFV 7.4	ZVPWPCVF 8.5	ZVPCIHV 10.3	ZVPCIUH 11.6	ZVPCIUU 13.0
19	ZIHIHVF 6.0	ZVPWPWFV 7.4	ZVPWHIHF 9.1	ZVPWUCHV 10.5	ZIUCUCHV 12.2	ZVPWUCV 13.4
20	ZIHCIVF 5.9	ZIHCIVF 7.2	ZIHCIVF 9.2	ZIHCIVF 10.9	ZIUWUWH 12.1	ZIUWUWH 13.3
21	ZIHCIVF 5.9	ZIHCIVF 7.2	ZIHCIVF 9.3	ZIHCIVF 10.5	ZIUWUWH 12.4	ZIUWUWH 13.3
F+1 E-1	ZVCVCFV 5.2	ZIVCVCFV 6.4	ZIHCVCFV 7.5	ZIHCVCFV 9.3	ZIHCUVI 10.2	ZIUWUWH 12.0
F+1 E-1	ZVCVCFV 5.2	ZCOCVF 6.0	ZCOCVIF 8.6	ZCHWHWCV 9.2	ZCOCVCOI 10.3	ZCOCOCOC 13
F+1 E-1	ZCHWCVF 6.0	ZCVCVIF 6.8	ZCHWCVIF 8.7	ZCOCOHWC 10.2	ZIHWHWCO 11.5	ZCOCOHWH 13.4
F+1 E-1	ZCDCIVF 5.2	ZIHWCVF 6.5	ZCOCVIF 8.0	ZIOCOCVIF 9.7	ZCOCOCV 11.5	ZIHWHWCO 13.0
F+1 E-1	ZIVWCVF 5.1	ZCVWVWCV 7.0	ZCDCVCFV 7.7	ZCDCVCOV 9.2	ZCOWOWC 11.0	ZCOWOWC 13.2
F+1 E-1	ZCVWCVF 5.4	ZCVWVWC 6.5	ZCDCVCFV 7.7	ZCOWCDCI 9.4	ZCOWOWCI 11.0	ZCOWOWC 13.3
F+1 E-1	ZCIWCIF 5.0	ZCIWIWCF 6.9	ZCDWIWCF 8.0	ZCDWDWCI 9.1	ZCDWKWC 10.2	ZCKWKWC 12.2
F+1 E-1	ZCIWCIF 5.0	ZCIWIWCF 6.9	ZCDWIWCF 8.0	ZCDWDWCI 9.1	ZCDWKWC 10.2	ZCKWKWC 12.2
F+1 E-1	ZCDVCFV 5.2	ZCIPCFV 6.1	ZCDVWCFV 7.8	ZCDPDVCFV 9.6	ZCKPDVCFV 10.7	ZCDPDPCV 12.2
F+1 E-1	ZWCWCIF 4.5	ZPWCWCIF 6.3	ZWCIPWCFV 7.5	ZPIPWCFV 8.9	ZCIPIWCFV 10.7	ZWCIPVWCFV 13.0
33	ZWCWCIF 4.5	ZPWCWCIF 6.3	ZWCIPWCFV 7.5	ZPIPWCFV 8.9	ZCIPIWCFV 10.7	ZWCIPVWCFV 13.0
34	ZWCWCIF 4.5	ZWCPCIF 6.7	ZWCPCPCIF 8.1	ZWCPCPCIF 10.3	ZPWCPCPCIF 12.0	ZWCPCPCIF 13.7
35	ZCIVCFV 4.6	ZWCPCIF 6.7	ZWCPIVCFV 8.3	ZWCPCPCIF 10.2	ZCIUIUCIF 10.9	ZCDHDHWC 13.1
40	Z Gy L F	Z Gy L Z L F	Z Gy L Z L Z Gy L F	Z Gy L Z L Z Gy L Z L F		
50	Z Wg L F	Z Wg L Z Wg L F	Z Wg L Z Wg L Z Wg L F	Z Wg L Z Wg L Z Wg L Z Wg L F		



Mark F on Wednesday / Saturday Committee boat courses refers to the Orange Finish Mark (S. I. 25)
 All marks are rounding marks except for those in a □ (box) which are passing marks
 Marks coloured red shall be rounded/passed to port
 Marks coloured green shall be rounded/passed to starboard
 Courses were designed with the aid of Soft Touch Programmes

STARTING TIMES FOR CLUB RACES

Class	Flag	Start
Tuesday – Committee Boat Starts* (May – 24 August)		
Etchells	E	1910
SB3	Class Flag	1915
Pupeteer 22	A	1920
Squib	K	1925
17-Footer	C	1930

Class	Flag	Start
Saturday – Pier Starts		
Pupeteer 22	A	1425
Squib	K	1430
17 Footer	C	1435

Class	Flag	Start
Tuesday – Pier Starts (31 Aug & 7 September)		
Etchells	E	1840
SB3	Class Flag	1845
Pupeteer 22	A	1850
Squib	K	1855
17 Footer	C	1900

Class	Flag	Start
Saturday – Committee Boat Starts (Windward / Leeward Courses)		
Etchells	E	1400
SB3	Class Flag	1405
Pupeteer 22	A	1410

Class	Flag	Start
Wednesday – Committee Boat Starts* (May – 25 August)		
Class 1	No. 1	1915
Class 2	No. 2	1920
White Sail Cruiser	No. 4	1925
Class 3	No. 3	1930

Class	Flag	Start
Sunday – Pier Starts (Special Races)		
Class 3	No. 3	1040
Pupeteer 22	No. 2	1045
Squib	K	1050
17 Footer	C	1055

Class	Flag	Start
Wednesday – Pier Starts (2nd & 9th September)		
Class 1	No. 1	1845
Class 2	No. 2	1850
White Sail Cruiser	No. 4	1855
Class 3	No. 3	1900

TIME LIMITS

(A) The time limit for each keelboat race is as follows:

Day	Dates	Time Limit
Tuesday	May, June, July, 3 August	2115
Tuesday	10 & 17 August	2045
Tuesday	24 & 31 August & 7 September	2030
Wednesday	April, May, June, July, 4 August	2115
Wednesday	11 & 18 August	2045
Wednesday	25th August, 1 & 8 September	2030
Saturday	May, June, July, August, September	1730
Sunday	May, June, July, August, September	1300

(B) Provided a keelboat (including SB3s) finishes within the time limit, it shall be extended by 15 minutes (Saturdays 30 minutes) for that class.

PIER START LINE
Between the red vertical line on the "Starter Hut" and

A - South Rowan (IALA)
B - Finish Mark (F)
C - Howth Mark (IALA)

NAVIGATION MARKS

S - Spit Mark (to be passed to the north & east)
R - South Rowan (to be passed to the south and west)
Q - Rowan Rocks (to be passed to the east & south)

Course Selection- Pier Starts
On the starter's hut, the two course boards displayed on the left side indicate the line on the Course Card (and wind direction), the third number which is positioned on the lower right side indicates the column number across the top of the card. The letter, which is positioned in the upper right side, indicates the starting line in operation e.g.

0	A
2	1

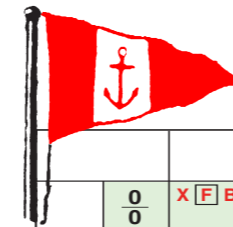
 (as per Sailing Regulation 22). Where Committee Boat is used for Pier Starts, the Course displayed for e.g.

0	21
---	----

 shall be read from the Pier Course Card as e.g.

0	2	1
---	---	---

HYC PIER COURSE CARD 2010



	1	2	3	4	5	6	7	8
	WEST GOING STARTS							
0	X[F]B F	X[F]B[F]X[F]	X B X B X F	Y H I K O	J B F	J K I H Y B F	J O I H Y F	J O I H I H
0	X[F]B F	Y H F	Y H V H Y F	Y H I D O Y F	J K F	J K B K F	J O B K F	J K B K I H
0	Y O Y F	Y O D O Y F	Y O D O D O	Y O D O D O	J K B F	J K B K F	J K C H Y F	J O B O Y F
0	Y O Y F	Y O D O Y F	Y O D O D O	Y O D O D O	J G F	J Y C H Y F	J G B G F	J G B O Y F
0	Y O Y F	Y O D O Y F	Y O I O Y F	Y O H C H Y	J G F	J K I O Y F	J G I O Y F	J G I O I O
F-1	Y O Y F	Y V C V C	Y O I O Y F	Y O I O I O	J G F	J Y I O K G	J Y I O I O	J Y I O I O
E+1	Y D X D Y F	Y D X D X D	Y D V C O Y	Y O I O I O	J Y I O F	J Y I O K G	J Y I O I O	J Y I O I O
F-1	I C D Y F	I C I C D Y	I C I C I C	I C D C D C	J Y I G F	J Y V O K G	J Y C O K G	J Y I G I V
E+1	I C D Y F	I C I C D Y	I C I C I C	I C D C D C	J Y C K F	J Y C G F	J Y V O I G	J Y W O I G
F-1	I C D Y F	I C I C D Y	I C I C I C	I C D C D C	J Y C K F	J Y C G F	J Y C K C K	J Y I G C G
E+1	C D Y F	V W I V C F	V W D V C F	V W I W D C	J Y I K F	J Y W Y F	J Y W K I K	J Y V G I W
F-1	C F	V W I V C F	V W D V C F	V W I W D C	J Y I K F	J Y W K F	J Y W K I K	J Y V G W K
E+1	W F	W I V C F	W D W F	W I W I W F	J Y V K F	J Y W K F	J Y W K I K	J Y W K W K
F-1	B[F]X[F]B F	B X[F]B[F]X F	B X B X B F	B X B X B F	J Y V Y F	J Y V K I Y F	J Y V K W Y	J Y H G W Y
E+1	B[F]X[F]B F	B X[F]B[F]X F	B X B X B F	B X B X B F	J Y V Y F	J Y V K V Y	J Y H G V Y	J Y H G V K
F-1	B[F]X[F]B F	B X[F]B[F]X F	B X B X B F	B X B X B F	B Y V Y F	B Y V I H Y F	B Y H K V Y	B Y H K V I
E+1	B[F]X[F]B F	B X[F]B[F]X F	B X B X B F	B X B X B F	B Y V Y F	B Y V I H Y F	B Y H K V Y	B Y H K V I
F-1	B[F]X[F]B F	B X[F]B[F]X F	P C V F	B X B X B F	B K B F	B Y H Y B F	B Y V I H Y B	B Y H K H K
E+1	B[F]X[F]B F	B X[F]B[F]X F	B X B X B F	B X B X B F	J K B F	J K B K B F	J Y H I O Y	J Y H I H I
F-1	Y H Y F	Y O D O Y F	Y H I D O Y F	Y H X O Y F	J K B F	J K B K B F	J Y H I O Y	J Y H I H I
E+1	Y O Y F	Y H C F	Y H C V C F	Y H C I O Y F	J K B F	J K B K B F	J Y H C V K	J Y H C O Y
F-1	Y O Y F	V C V C F	V C I O Y F	V C I V C I V	J G B F	J G B K Y F	J Y H C V G	J Y H C O Y
E-1	Y O Y F	V C V C F	V C V C D Y	V C V C I V	J G F	J O I G F	J O I G B F	J O I O I G
F+1	Y O Y F	V C V C F	V C V C D Y	V C O C D Y	J O I Y F	J O I G K F	J O C G K F	J O I O I G
E-1	Y O Y F	V C V C F	V C V C D Y	Y O C H W	J O I Y F	J O I G K F	J O C G K F	J O I O I G
F+1	Y D C F	Y D C I C F	Y D C I V W	Y D C I V W V	J G I K F	J G C K F	J G I G I K F	J G C O V
E-1	Y D C F	Y D C I C F	Y D C I V W	Y D C I V W V	J Y C K F	J G C K F	J Y C K C K	J G C G I K
F+1	Y D C F	Y D C I C F	Y D C I V W F	Y D C I V W V	J Y C K F	J G C K F	J Y C K C K	J G C K C K
E-1	Y I W F	Y D W F	Y I W I W F	Y D W D W F	J Y W K F	J Y W K I K	J Y C G V Y F	J Y W K C K
F+1	W F	Y D W F	Y I W I W F	Y D W D W F	J Y W Y F	J K V K I Y F	J Y W K V Y	J Y W K V K
E-1	W F	W[F]B F	X B X B X F	X B X B X B	J Y W Y F	J K V K V Y	J Y W K V Y	J Y W K V K
F+1	X[F]B F	X[F]B[F]X[F]	X B X B X F	X B X B X B	J K V Y B F	J Y I K V Y	J K V K V Y	J Y I K V K V
E-1	X[F]B F	X[F]B[F]X[F]	X B X B X F	X B X B X B	J Y V Y B F	J Y V C W	J Y V K H Y	J Y P C W Y
F+1	X[F]B F	X[F]B[F]X[F]	W C W F	W C W C W F	J Y V Y B F	J Y V C W Y	J Y V I K H Y	J Y P C W Y
E-1	X[F]B F	X[F]B[F]X[F]	X B X B X F	X B X B X B	J Y H Y B F	J Y H V I V I	J Y V I K H Y	J Y H V I K
F+1	X[F]B F	X[F]B[F]X[F]	X B X B X F	X B X B X B	J Y H Y B F	J Y H W K Y	J Y H I H I	J Y H C P Y
E-1	X[F]B F	X[F]B[F]X[F]	X B X B X F	X B X B X B	J Y H Y B F	J Y H W K Y	J Y H I H I	J Y H C P Y

All marks are rounding marks except for those in a (box) which are passing marks
 Marks coloured red shall be rounded/passed to port
 Marks coloured green shall be rounded/passed to starboard
 Courses were designed with the aid of Soft Touch Programmes