

## HYC PIER COURSES 2008

	1	2	3	4	5	6	7	8
	WEST GOING STARTS			EAST GOING STARTS				
0/0	X[F]B F 2.6	X[F]B[F]X[F] 4.7	X B X B X F 6.7	Y H I K O 8.0	J B F 1.1	J K I H Y B F 6.8	J O I H Y F 7.2	J O I H I H 10.3
0/1	X[F]B F 2.6	Y H F 5.0	Y H V H Y F 6.4	Y H I D O Y F 7.6	J K F 2.5	J K B K F 5.8	J O B K F 8.0	J K B K I H 9.3
0/2	Y O Y F 3.9	Y O D O Y F 5.8	Y O D O D O 7.4	Y O D O D O 9.1	J K B F 3.9	J K B K F 5.9	J K C H Y F 7.1	J O B O Y F 10.3
0/3	Y O Y F 3.9	Y O D O Y F 5.8	Y O D O D O 7.4	Y O D O D O 9.1	J G F 3.9	J Y C H Y F 6.5	J G B G F 8.3	J G B O Y F 9.4
0/4	Y O Y F 3.9	Y O D O Y F 5.8	Y O I O Y F 6.8	Y O H C H Y 8.4	J G F 3.9	J K I O Y F 5.8	J G I O Y F 7.4	J G I O I O Y 10.0
F-1 E+1	0/5	Y O Y F 4.1	Y V C V C 5.4	Y O I O Y F 6.8	Y O I O I O 9.0	J G F 3.9	J Y I O K G 6.9	J Y I O I O 9.7
F-1 E+1	0/6	Y D X D Y F 4.2	Y D X D X D 6.0	Y D V C O Y 6.9	Y O I O I O 9.0	J Y I O F 5.6	J Y I O K G 7.0	J Y I O I O 9.8
F-1 E+1	0/7	I C D Y F 4.1	I C I C D Y 5.6	I C I C I C 6.9	I C D C D C 9.0	J Y I G F 5.2	J Y V O K G 7.3	J Y C O K G 8.3
F-1 E+1	0/8	I C D Y F 4.1	I C I C D Y F 5.6	I C I C I C D 6.9	I C D C D C 9.0	J Y C K F 5.5	J Y C G F 6.9	J Y V O I G 10.1
F-1 E+1	0/9	I C D Y F 4.1	I C I C D Y F 5.6	I C I C I C D 6.9	I C D C D C 9.0	J Y C K F 5.7	J Y C G F 6.9	J Y C K C K 10.0
F-1 E+1	1/0	C D Y F 3.8	V W I V C F 6.3	V W D V C F 7.1	V W I W D C 8.9	J Y I K F 3.9	J Y W Y F 6.0	J Y W K I K 9.9
F-1 E+1	1/1	C F 2.9	V W I V C F 6.3	V W D V C F 7.1	V W I W D C 8.9	J Y I K F 3.9	J Y W K F 6.4	J Y W K I K 10.3
F-1 E+1	1/2	W F 4.2	W I V C F 6.0	W D W F 7.4	W I W I W F 8.7	J Y V K F 4.9	J Y W K F 6.4	J Y W K I K 10.6
F-1 E+1	1/3	B[F]X[F]B F 3.3	B X[F]B[F]X F 5.1	B X B X B F 7.0	B X B X B F 8.5	J Y V Y F 4.4	J Y V K I Y F 6.1	J Y H G W Y 9.8
F-1 E+1	1/4	B[F]X[F]B F 3.3	B X[F]B[F]X F 5.1	B X B X B F 7.0	B X B X B F 8.5	J Y V Y F 4.7	J Y V K V Y 7.5	J Y H G V Y 10.3
	1/5	B[F]X[F]B F 3.3	B X[F]B[F]X F 5.1	B X B X B F 7.0	B X B X B F 8.5	B Y V Y F 5.4	B Y V I H Y F 7.7	B Y H K V I 12.7
	1/6	B[F]X[F]B F 3.3	B X[F]B[F]X F 5.1	B X B X B F 7.0	B X B X B F 8.5	B Y V Y F 5.5	B Y V I H Y F 7.7	B Y H K V I 11.0
	1/7	B[F]X[F]B F 3.3	B X[F]B[F]X F 5.1	P C V F 7.5	B X B X B F 8.5	B K B F 4.0	B Y H Y B F 7.0	B Y H K H K 10.2
	1/8	B[F]X[F]B F 3.3	B X[F]B[F]X F 5.1	B X B X B F 7.0	B X B X B F 8.5	J K B F 3.6	J K B K B F 6.7	J Y H I O Y 9.5
	1/9	Y H Y F 4.8	Y O D O Y F 5.6	Y H I D O Y F 6.6	Y H X O Y F 7.7	J K B F 3.6	J K B K B F 6.7	J Y H I O Y 9.5
	2/0	Y O Y F 4.4	Y H C F 5.4	Y H C V C F 6.9	Y H C I O Y F 7.6	J K B F 3.6	J K B K B F 6.7	J Y H C V K 9.9
	2/1	Y O Y F 4.4	V C V C F 5.7	V C I O Y F 6.6	V C I V C I V 8.0	J G B F 4.8	J G B K Y F 6.9	J Y H C V G 9.9
F+1 E-1	2/2	Y O Y F 4.4	V C V C F 5.8	V C V C D Y 6.8	V C V C I V C 7.8	J G F 3.8	J O I G F 7.3	J O I O I G 10.1
F+1 E-1	2/3	Y O Y F 4.4	V C V C F 5.8	V C V C D Y 6.8	V C O C D Y F 8.5	J O I Y F 5.6	J O I G K F 7.2	J O I O I G 10.1
F+1 E-1	2/4	Y O Y F 4.4	Y O C F 5.4	V C V C D Y 6.8	Y O C H W F 8.9	J O I Y F 5.6	J O I G K F 7.2	J O I O I G 10.1
F+1 E-1	2/5	Y D C F 4.0	Y D C I C F 5.3	Y D C I V W 6.6	Y D C I V W V 8.6	J G I K F 5.5	J G C K F 7.3	J G C O V K 10.2
F+1 E-1	2/6	Y D C F 4.0	Y D C I C F 5.3	Y D C I V W 6.6	Y D C I V W V 8.6	J Y C K F 4.9	J G C K F 7.3	J Y C K C K 10.1
F+1 E-1	2/7	Y D C F 4.0	Y D C I C F 5.3	Y D C I V W 6.6	Y D C I V W V 8.6	J Y C K F 4.9	J G C K F 7.3	J Y C K C K 10.5
F+1 E-1	2/8	Y I W F 4.2	Y D W F 5.2	Y I W I W F 6.6	Y D W D W F 8.3	J Y W K F 6.0	J Y W K I K 7.8	J Y W K C K 10.7
F+1 E-1	2/9	W F 4.3	Y D W F 5.2	Y I W I W F 6.6	Y D W D W F 8.3	J Y W Y F 5.7	J K V K I Y F 6.7	J Y W K V Y 10.3
F+1 E-1	3/0	W F 4.3	W[F]B F 6.0	X B X B X F 6.7	X B X B X B 8.8	J Y W Y F 5.7	J K V K V Y 7.6	J Y W K V Y 10.3
F+1 E-1	3/1	X[F]B F 2.6	X[F]B[F]X[F]B 4.7	X B X B X F 6.7	X B X B X B 8.8	J K V Y B F 5.5	J Y I K V Y 6.8	J K V K V Y 9.7
F+1 E-1	3/2	X[F]B F 2.6	X[F]B[F]X[F]B 4.7	X B X B X F 6.7	W C W C W F 7.4	J Y V Y B F 5.5	J Y V C W Y 7.8	J Y P C W Y 10.2
	3/3	X[F]B F 2.6	X[F]B[F]X[F]B 4.7	W C W F 6.0	W C W C W F 7.4	J Y V Y B F 5.5	J Y V C W Y 7.8	J Y P C W Y 10.2
	3/4	X[F]B F 2.6	X[F]B[F]X[F]B 4.7	X B X B X F 6.7	X B X B X B 8.8	J Y H Y B F 6.6	J Y H V I V I 8.1	J Y H V I K 10.3
	3/5	X[F]B F 2.6	X[F]B[F]X[F]B 4.7	X B X B X F 6.7	X B X B X B 8.8	J Y H Y B F 6.6	J Y H W K Y 8.3	J Y H C P Y 10.6

All marks are rounding marks except for those in a   (box) which are passing marks

Marks coloured red shall be rounded/passed to port

Marks coloured green shall be rounded/passed to starboard

Courses were designed with the aid of Soft Touch Programmes

## HOWTH YACHT CLUB - COMMITTEE BOAT COURSES 2008

	1	2	3	4	5	6	
00	Z W I H I F 5.5	Z W C P W I F 6.6	Z U P W P C I F 8.0	Z C I U I H C I 9.5	Z C I U P W P W 10.5	Z W C I U I U P 12.6	
01	Z W C P W C F 6.24	Z W C U P W C F 7.9	Z W C U V H P W 9.8	Z W C U P W P W 10.2	Z W C U C I H P 12.0	Z W C U C I H I 14.4	
02	Z C H W C F 6.0	Z W C H W C F 6.9	Z W C H C V W C 8.4	Z W C H C H W 10.0	Z W C U C H W C 11.0	Z W I C H C H C 14.0	
03	Z W C H C F 6.0	Z W C H W C F 6.9	Z W C H C V W C 8.7	Z W C H C H W 10.3	Z W C U C H W C 11.0	Z W C H C H C U 14.1	
04	Z C H W C F 6.0	Z W C H W C F 6.9	Z W C H C V W C 8.7	Z W C H C H W 10.0	Z W C H C V C 12.1	Z W I E I E W 13.3	
F-1 E+1	05	Z W C V W C F 5.3	Z W C O W C F 6.9	Z W C O H W C F 8.6	Z W C H W H 10.0	Z W C O H W H 11.6	Z W C O I E W 13.3
F-1 E+1	06	Z V W H W C F 6.1	Z W C O V C F 6.7	Z H W C O V 7.8	Z V W C O I O V 9.0	Z V W C O C O V 10.3	Z O H W C O C O 12.8
F-1 E+1	07	Z V W H W C F 6.1	Z V C D C D V C 7.6	Z V W H W H C F 8.7	Z V W C O C O V 10.3	Z O H W C O C O 11.9	Z V W C O C E 13.2
F-1 E+1	08	Z V C D V C F 5.4	Z V C D C D V C 7.6	Z V W O W V W 8.9	Z V C D V W O W 9.8	Z V W O U W O 11.8	Z V W C G H W O 13.1
F-1 E+1	09	Z V C D V C F 5.4	Z V W V W V W 7.0	Z V C D C D V W 8.6	Z V W O W V W 9.6	Z V W O C K V C 10.8	Z V W O W C 13.3
F-1 E+1	10	Z V W I V W F 5.4	Z V W I W I V W 7.3	Z V W D W I V W 8.5	Z V W D W I 9.4	Z V W D W K V 10.4	Z V W D W D V 12.7
F-1 E+1	11	Z V W I V W F 5.4	Z V W D W F 6.1	Z V W I W I V W F 7.6	Z V W D W I 9.4	Z V W D W K V 10.4	Z V W D W D V 12.7
F-1 E+1	12	Z V W I V W F 5.4	Z V W I W I V W 7.6	Z V W I W V W F 8.5	Z V W D W D H W 10.2	Z V W D W D W I 11.8	Z V W D W D V 13.8
F-1 E+1	13	Z P I V W F 5.7	Z H P I V W F 6.4	Z H P D V W F 7.7	Z H P D V D V W 9.4	Z V P D O U O 11.2	Z H P D P D V 12.3
F-1 E+1	14	Z V W C W C W 5.6	Z H P I V W F 6.4	Z H P D V W F 7.7	Z V P I V W C V 9.0	Z I P I P I V W F 10.5	Z V P D P D H W 12.6
	15	Z V W C V W F 5.6	Z V P I V W F 6.7	Z I P D V W F 7.5	Z I P I V W C V 9.2	Z V P I P I V W F 10.5	Z V P D P D H W 12.7
	16	Z V P C V F 5.7	Z V P C W C V F 7.2	Z V P C W C V F 7.8	Z V P C P C V F 9.6	Z I U D H P C Y 10.8	Z I U D H D P C 13.3
	17	Z V P C V F 6.0	Z V P C V I V F 7.2	Z V P W P C V F 8.3	Z V P C P C V F 10.0	Z V P C I H I O H 11.5	Z V P C I U I U 13.0
	18	Z V P W V F 5.4	Z V P W P W V F 7.4	Z V P W P C V F 8.5	Z V P C I H I H 10.3	Z V P C I U I H 11.6	Z V P C I U I U 13.0
	19	Z I H I H V F 6.0	Z V P W P W V F 7.4	Z V P W H I H V 9.1	Z V P W U C H V 10.5	Z I U C U C H V 12.2	Z V P W U C U C 13.4
	20	Z I H C I V F 5.9	Z I H C H V F 7.2	Z I H C H C I V F 9.2	Z I H C H C I H 10.9	Z I U W U W I H 12.1	Z I U W U W I H 13.3
	21	Z I H C I V F 5.9	Z I H C H V F 7.2	Z I H C V C I H V 9.3	Z I H C U W C I 10.5	Z I U W U W C I 12.4	Z I U W U W I H 13.3
F+1 E-1	22	Z V C V C V F 5.2	Z I V C V C I V F 6.4	Z I H C V C I V F 7.5	Z I H C V C I H V 9.3	Z I H C U W I 10.2	Z I U W U W I 12.0
F+1 E-1	23	Z V C V C V F 5.2	Z C O C V F 6.0	Z C O C O I V F 8.6	Z C H W H W C V 9.2	Z C O C V C O I 10.3	Z C O C O C O C 13
F+1 E-1	24	Z C H W C V F 6.0	Z C V C O I V F 6.8	Z C H W C O I V 8.7	Z C O C O H W C 10.2	Z I H W H W C O 11.5	Z C O C O H W H 13.4
F+1 E-1	25	Z C D C I V F 5.2	Z I H W C I V F 6.5	Z C O C O V F 8.0	Z I O C O C I V F 9.7	Z C O C O C O V 11.5	Z I H W H W C O 13.0
F+1 E-1	26	Z I V W C V F 5.1	Z C V W W C V 7.0	Z C D C D C I V F 7.7	Z C D C D C O V 9.2	Z C O W O W C 11.0	Z C O W O W C D 13.2
F+1 E-1	27	Z C V W C V F 5.4	Z C V W W C V 6.5	Z C D C D C I V F 7.7	Z C O W C D C I 9.4	Z C O W O W C I 11.0	Z C O W O W C D 13.3
F+1 E-1	28	Z C I W C I F 5.0	Z C I W I W C I F 6.9	Z C D W I W C I F 8.0	Z C D W D W C I 9.1	Z C D W K W C 10.2	Z C K W K W C D 12.2
F+1 E-1	29	Z C I W C I F 5.0	Z C I W I W C I F 6.9	Z C D W I W C I 8.0	Z C D W D W C I 9.1	Z C D W K W C I 10.2	Z C K W K W C 12.2
F+1 E-1	30	Z C I W C I F 5.0	Z C I W I W C I F 7.1	Z C D W I W C I F 8.0	Z C D W D W C I 9.1	Z C D W K W C I 10.2	Z C K W K W C D 12.2
F+1 E-1	31	Z C D V C I F 5.2	Z C I P C I F 6.1	Z C D V K V C I F 7.8	Z C D P D V C I F 9.6	Z C K P D V C I F 10.7	Z C D P D P C I 12.2
F+1 E-1	32	Z W C W C I F 4.5	Z P W C W C I F 6.3	Z W C I P W C I 7.5	Z P I P W C I 8.9	Z C I P I P W C I 10.7	Z W C I P V P V P 13.0
	33	Z W C W C I F 4.5	Z P W C W C I F 6.3	Z W C I P W C I 7.5	Z P W C I P W C 8.9	Z C I P I P W C I 10.7	Z W C I P V P V P 13.0
	34	Z W C W C I F 4.5	Z W C P C I F 6.7	Z W C W C P C I F 8.1	Z W C P C P W C 10.3	Z P W C P C P W 12.0	Z W C P C P C P 13.7
	35	Z C I V C I F 4.6	Z W C P C I F 6.7	Z W C P I V C I F 8.3	Z W C P C P W 10.2	Z C I U I U C I F 10.9	Z C D H D H W C 13.1
	40	Z Gy L F	Z Gy L Z L F	Z Gy L Z L Z Gy L F	Z Gy L Z L Z Gy L Z L F		
	50	Z Wg L F	Z Wg L Z Wg L F	Z Wg L Z Wg L Z Wg L F	Z Wg L Z Wg L Z Wg L Z Wg L F		

Mark F on Committee boat courses refers to the Orange Finish Mark (S. I. 13)  
All marks are rounding marks except for those in a   (box) which are passing marks

Marks coloured red shall be rounded/passed to port  
Marks coloured green shall be rounded/passed to starboard

Courses were designed with the aid of Soft Touch Programmes

**Excerpts from 2008 Sailing Regulations**

**1 – SAFETY**

Competitors in all classes (keelboat and dinghy) shall wear lifejackets or suitable personal flotation devices at all times. Wet suits and dry suits are not suitable personal flotation devices. It is strongly recommended that every keelboat carries a VHF radio.

**8 - MANAGEMENT OF RACES**

Where relevant, information may be transmitted on VHF radio. Channel M (37A) shall be used. A boat that infringes a rule at or near the finishing line and retires shall notify the PRO of its retirement as soon as possible.

**11 – PENALTY FOR BREAKING A RULE OF PART 2**

RRS 44.1 'Taking a Penalty' and RRS 44.2 'Two Turns Penalty' shall apply.

**13 – ASSISTANCE**

The attention of all competitors is drawn to RRS Fundamental Rule 1.1. 'Helping Those in Danger'. If appropriate, the provisions of RRS 62 may be invoked. All boats with VHF radios are required to keep a listening watch on Channel 16 when at sea.

**18 – STARTING TIMES FOR CLUB RACES**

Races will be started as per RRS 26 with the warning signal given 5 minutes before the starting signal. A countdown from 1 minute before each start may be given on VHF radio. A boat shall not start later than 15 minutes after her valid starting signal. Starting times are as follows:

Class	Flag	Start	Class	Flag	Start
<b>Tuesday – Committee Boat Starts* (April – 26 August)</b>			<b>Wednesday – Pier Starts (3 September)</b>		
Etchells	E	1910	Class 1	No. 1	1845
SB3	Class Flag	1915	Class 2	No. 2	1850
Puppeter 22	A	1920	White Sail Cruiser	No. 4	1855
Squib	K	1925	Class 3	No. 3	1900
17-Footer	C	1930			
<b>Tuesday – Pier Starts (2 September)</b>			<b>Saturday – Pier Starts</b>		
Etchells	E	1840	Puppeter 22	A	1425
SB3	Class Flag	1845	Squib	K	1430
Puppeter 22	A	1850	17-Footer	C	1435
Squib	K	1855			
17 Footer	C	1900			
<b>Wednesday – Committee Boat Starts* (April – 27 August)</b>			<b>Sunday - Pier Starts – (Special Races)</b>		
Class 1	No. 1	1915	Class 3	No. 3	1040
Class 2	No. 2	1920	Puppeter 22	A	1045
White Sail Cruiser	No. 4	1925	Squib	K	1050
Class 3	No. 3	1930	17-Footer	C	1055

**19 – TIME LIMITS**

The time limit for each keelboat race is as follows:

Day	Dates	Time Limit	Day	Dates	Time Limit
Tuesday	April, May, June, July, 5 August	2115	Wednesday	13 & 20 August	2045
Tuesday	12 & 19 August	2045	Wednesday	27 August & 3 September	2030
Tuesday	26 August & 2 September	2030	Saturday	April, May, June, July, August, September	1730
Wednesday	April, May, June, July, 6 August	2115	Sunday	May, June, July, August, September	1300

Provided a boat finishes within the time limit, it shall be extended by 15 minutes (Saturdays 30 minutes) for that class.

**20 – KEELBOAT STARTING AREA, PIER STARTS**

The starting area is defined as being bounded by an imaginary line drawn from the new lighthouse to the South Rowan Buoy, to the Howth Mark, to the elbow of the East Pier. In cruiser classes, no boat shall enter this area between the time of the warning signal for the first of the series of starts and that class's warning signal.

The Race Committee may lodge a protest against a boat that enters the keelboat starting area, as defined in Regulation 20 (A), between the time of the warning signal for the first of the series of starts on the day and the boat's warning signal.

**21 - KEELBOAT STARTING AREA, COMMITTEE BOAT STARTS**

The starting area is defined as being an imaginary line drawn from the Island Mark, to the Cush Mark, to the West Mark, to the Viceroy Mark, to the Island Mark.

Boats shall keep clear of the starting line until their warning signal.

Boats having started shall keep clear of the starting line while other starts are in progress. The Committee Boat shall fly flag U while this regulation is in force.

**22 – KEELBOAT STARTING LINE, PIER STARTS**

The starting line shall be one of the following, identified by a letter A, B or C displayed on the starter's hut/Committee Boat :-

**Starting Line A:** A line between the red vertical line on the starter's hut and the South Rowan Buoy.

**Starting Line B:** A line between the red vertical line on the starter's hut and Finish Mark F or the red and white pole/mainmast on the Committee Boat.

**Starting Line C:** A line between the red vertical line on the starter's hut and the Howth Mark.

For all west going starts, boats shall pass to the south of the South Rowan Buoy.

For all east going starts, boats shall pass south of the Finish Mark (F). Should Mark F be missing, flag H will be displayed and boats shall pass south of the Howth Mark.

**23 – KEELBOAT STARTING LINE, COMMITTEE BOAT STARTS**

The starting line shall be between the red and white pole/mainmast on the Committee Boat and an Outer Distance Mark, an orange buoy, which shall be left to port when starting.

The Race Committee may adjust the starting line up to three minutes before the start of a race. This changes RRS 27.2.

Should flag D be displayed at the East Pier starter's hut, Committee Boat and/or the Committee Boat and/or the marina bridge, accompanied by one sound signal, pier starts and relevant regulations will be substituted for offshore committee boat starts.

**24 – KEELBOAT PIER FINISHING LINE**

The finishing line shall be between the Finish Mark F and the red vertical line on the East Pier starter's hut.

Should the Committee Boat be on station at the Finish Mark (F) then the finishing line shall be between the red and white pole/mainmast on the Committee Boat

displaying a blue flag and the red vertical line on the East Pier starter's hut.

**25 – KEELBOAT COMMITTEE BOAT FINISHING LINE**

The finishing line shall be a line between the red and white pole/mainmast on the Committee Boat displaying a blue flag and an orange Finish Mark, which shall be left to port.

Unless the course is shortened, the finish line will be located approximately upwind of the last fixed mark on the course.

**29 – NAVIGATION MARKS/OBSTRUCTIONS, KEELBOATS**

In keelboat classes the navigation marks in and around Howth Sound shall be left as follows after a boat's starting signal:

South Rowan Buoy: to be passed to the south and west.

Howth Mark: not a mark on any course except as in Regulation 22 (C).

Rowan Rocks Buoy: to be passed to the east and south.

Spit Mark: to be passed to the north and east.

Where the Thulla and Finish Mark (except when finishing) are described as marks on the course, they shall be passed to the south.

Any part of Ireland's Eye capable of being touched by a boat, while racing, is designated as an obstruction to sea room.

The attention of competitors is drawn to the existence of many underwater hazards in the vicinity of Ireland's Eye, Howth Sound and over the Spit Bank. Should they choose to sail amongst these hazards, they do so at their own risk. The Club accepts no responsibility for the consequences of any such deviation from the set courses.

**31 – ABANDONMENT/POSTPONEMENT**

Abandonment before the starting signal/Postponement shall be as per RRS 27.3. Flag signals will be made from the Committee Boat, starter's hut or the top of the marina bridge, as relevant.

**32 – INDIVIDUAL RECALLS** – Individual recalls shall be as per RRS 29.1.

**33 – GENERAL RECALLS** – General recalls shall be in accordance with RRS 29.2.

**34 – ABANDONMENT AFTER THE START**

Abandonment of a race after the start shall be as per RRS 32.1. However, if not all races are being abandoned flag N shall be displayed over the class flag of the classes affected.

**35 – FINISHING A RACE**

Keelboats having finished shall not recross their own finishing line in the opposite direction while a course board is still displayed except for some unavoidable cause. Any so doing may be disqualified.

**36 – NOTIFICATION OF COURSE**

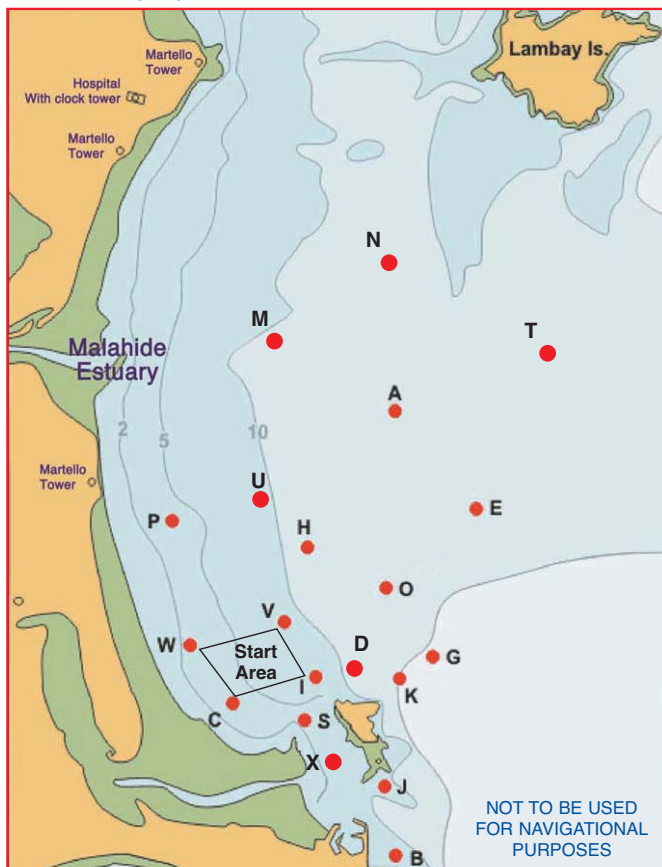
RRS 27.1 is changed as follows: - The course board(s) shall be displayed for each class following its warning signal and shall be displayed for not less than 4 minutes before the start.

If a change of starting line is required after the warning signal, there shall be a postponement.

**37 – KEELBOATS SHORTENED COURSE**

The PRO may at his discretion decide to shorten a race. The procedure will be either: - A Finish Boat will be positioned at the mark on the course at which the race is to be finished. When on station the boat will display a blue flag. Flag S will be displayed and two sound signals made as the leading boat approaches the mark at which the race is to be finished. Boats shall finish between the Finish Boat and the relevant mark. Flag S displayed alone signals that all races not yet finished are shortened, flag S over class flag(s) signals that races for the relevant classes are shortened.

For courses that prescribe a leg passing up or down the Sound, the PRO may decide to shorten the race using the East Pier finishing line. Flag S will be displayed and two sound signals made as the leading boat approaches the finishing line. Flag S displayed alone signals that all races not finished are shortened. Flag S over class flags signals that races for the relevant classes are shortened.



**Race Marks 2008 - Relative Bearings - Magnetic (approx)**

	A	B	C	D	E	G	H	I	J	K	M	N	O	P	Q	S	T	U	V	W	X
<b>A</b>		186°	216°	196°	146°	168°	220°	207°	188°	184°	295°	002°	192°	250°	185°	203°	071°	248°	215°	229°	200°
<b>B</b>	006°		319°	352°	019°	024°	350°	336°	357°	010°	347°	005°	002°	331°	010°	331°	022°	347°	340°	321°	328°
<b>C</b>	036°	139°		084°	058°	081°	032°	077°	126°	092°	004°	025°	058°	346°	121°	111°	047°	015°	038°	327°	127°
<b>D</b>	016°	172°	264°		043°	078°	347°	272°	170°	110°	344°	011°	023°	315°	161°	233°	036°	342°	312°	287°	212°
<b>E</b>	326°	199°	238°	223°		190°	264°	233°	204°	207°	307°	346°	238°	273°	202°	225°	028°	284°	246°	252°	220°
<b>G</b>	348°	204°	261°	258°	010°		305°	263°	214°	236°	325°	354°	306°	297°	211°	249°	021°	314°	281°	275°	239°
<b>H</b>	040°	170°	212°	167°	084°	125°		191°	168°	151°	342°	021°	125°	285°	164°	187°	055°	334°	205°	238°	184°
<b>I</b>	027°	156°	257°	092°	053°	083°	011°		148°	101°	353°	018°	048°	326°	140°	177°	043°	357°	350°	293°	172°
<b>J</b>	008°	177°	306°	350°	024°	034°	348°	328°		018°	345°	006°	004°	326°	062°	317°	026°	345°	334°	312°	305°
<b>K</b>	004°	190°	272°	290°	027°	056°	331°	281°	198°		337°	003°	350°	310°	190°	259°	028°	332°	304°	288°	242°
<b>M</b>	115°	167°	184°	164°	127°	145°	162°	173°	165°	157°		066°	152°	204°	163°	173°	094°	166°	173°	193°	172°
<b>N</b>	182°	185°	205°	191°	166°	174°	201°	198°	186°	183°	246°		187°	225°	184°	196°	125°	214°	202°	214°	194°
<b>O</b>	012°	182°	238°	203°	058°	126°	305°	228°	184°	170°	332°	007°		292°	180°	215°	040°	319°	256°	260°	207°
<b>P</b>	070°	151°	166°	135°	093°	117°	105°	146°	146°	130°	024°	045°	112°		143°	151°	071°	073°	136°	178°	153°
<b>Q</b>	005°	190°	301°	341°	022°	031°	344°	320°	242°	010°	343°	004°	360°	323°		308°	024°	342°	329°	308°	295°
<b>S</b>	023°	151°	291°	053°	045°	069°	007°	357°	137°	079°	353°	016°	035°	331°	128°		039°	357°	353°	309°	166°
<b>T</b>	251°	202°	227°	216°	208°	201°	235°	223°	206°	208°	274°	305°	220°	251°	204°	219°		249°	229°	236°	215°
<b>U</b>	068°	167°	195°	162°	104°	134°	154°	177°	165°	152°	346°	034°	139°	253°	162°	177°	069°		180°	213°	176°
<b>V</b>	035°	160°	218°	132°	066°	101°	025°	170°	154°	124°	353°	022°	076°	316°	149°	173°	049°	000°		264°	171°
<b>W</b>	049°	141°	147°	107°	072°	095°	058°	113°	132°	108°	013°	034°	080°	358°	128°	129°	056°	033°	084°		135°
<b>X</b>	020°	148°	307°	032°	040°	059°	004°	352°	125°	062°	352°	014°	027°	333°	115°	346°	035°	356°	351°	315°	

HIGH WATER HOWTH (BST) - 2008							
	April	May	June	July	August	Sept.	
1	2114	2124	2228	1036	1219	1321	1
2	2206	2213	1051	1134	1305	1356	2
3	1014	1026	1145	1228	1348	1430	3
4	1101	1116	1238	1320	1428	1503	4
5	1144	1205	1330	1409	1507	1538	5
6	1227	1252	1422	1455	1545	1618	6
7	1310	1340	1514	1542	1625	1709	7
8	1355	1430	1607	1629	1710	1819	8
9	1330	1523	1704	1717	1805	1941	9
10	1529	1622	1804	1809	1913	2053	10
11	1627	1730	1905	1906	2025	2147	11
12	1739	1843	2004	2007	2130	1025	12
13	1906	1954	2057	2105	1003	1105	13
14	2037	2054	2146	2159	1051	1142	14
15	2131	2144	2228	1023	1133	1218	15
16	2220	2225	1044	1110	1211	1254	16
17	1026	1034	1128	1153	1247	1331	17
18	1108	1114	1209	1233	1322	1408	18
19	1145	1152	1249	1311	1358	1449	19
20	1220	1228	1328	1347	1434	1534	20
21	1253	1305	1406	1424	1513	1628	21
22	1325	1341	1446	1502	1557	1738	22
23	1359	1419	1526	1542	1648	1902	23
24							